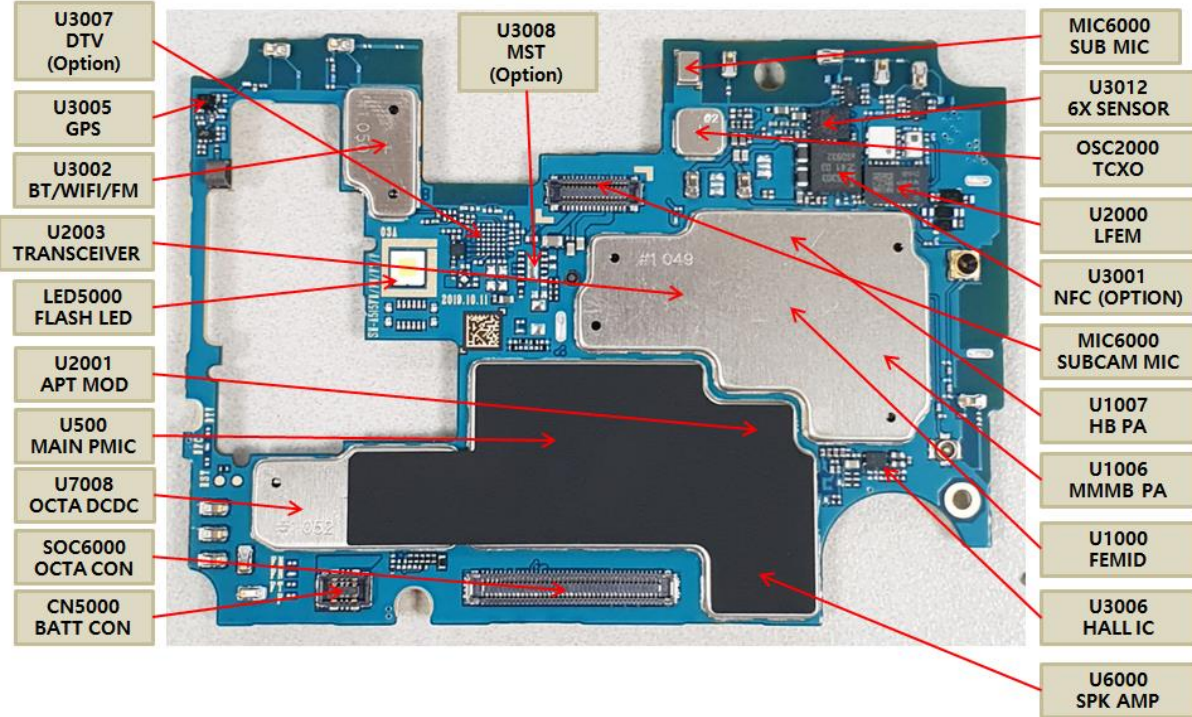


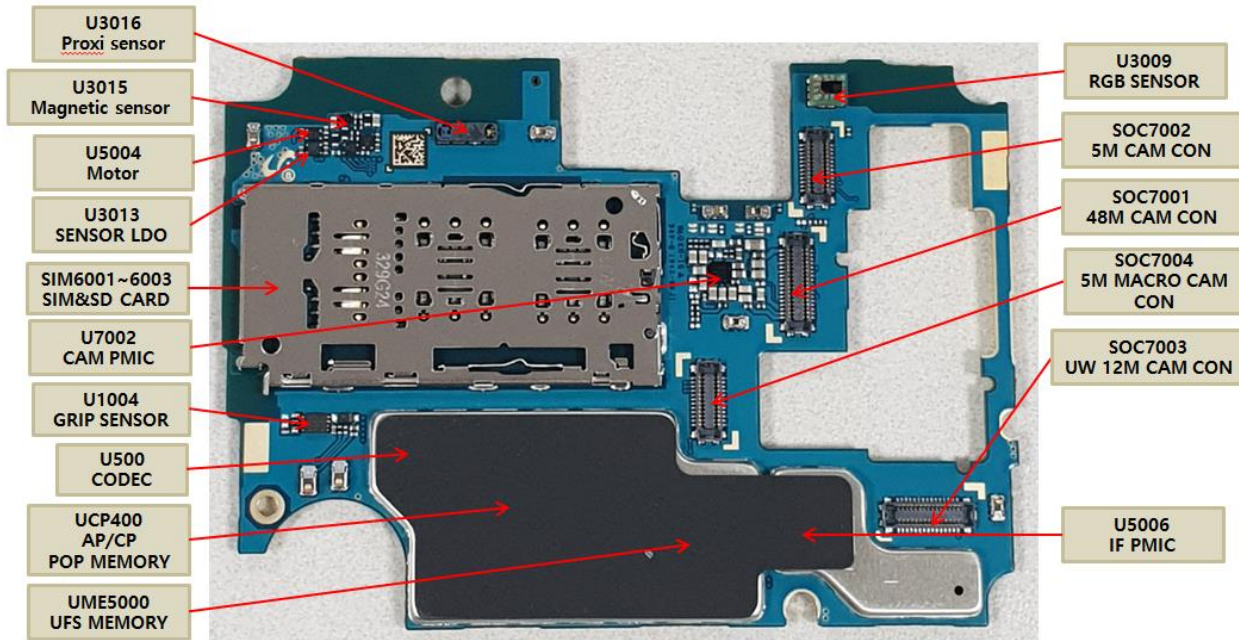
8. Level 3 Repair

8-1. Components Layout

MAIN PBA (TOP SIDE)

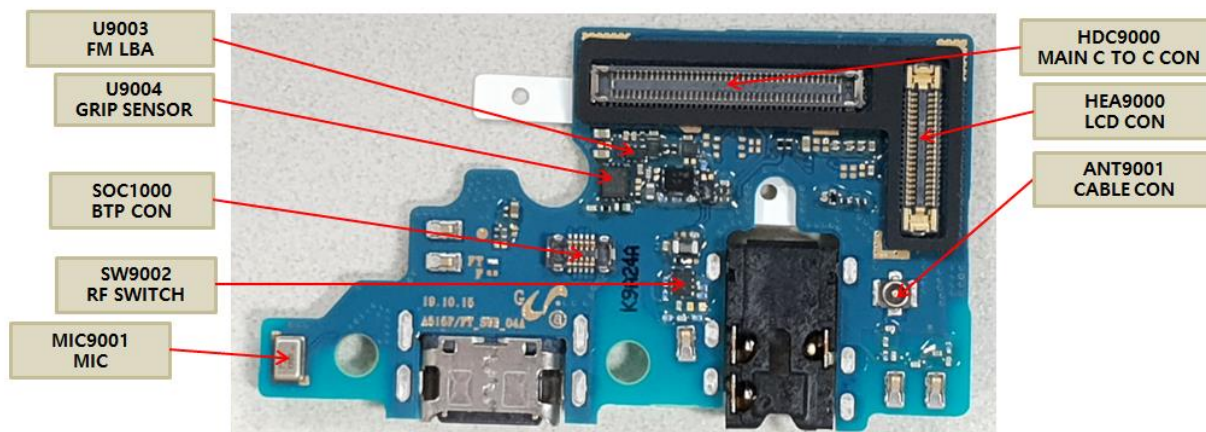


MAIN PBA (BOTTOM SIDE)

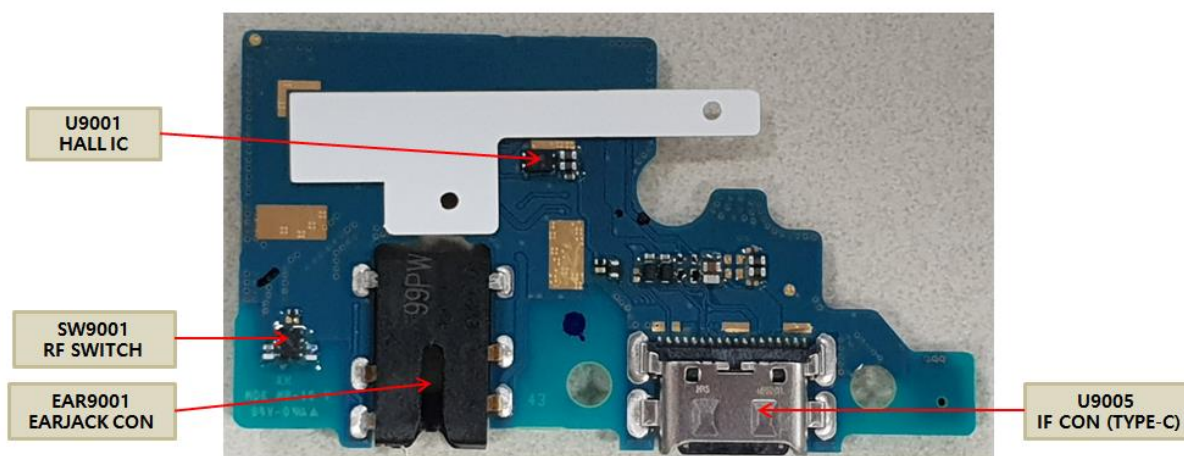


8. Level 3 Repair

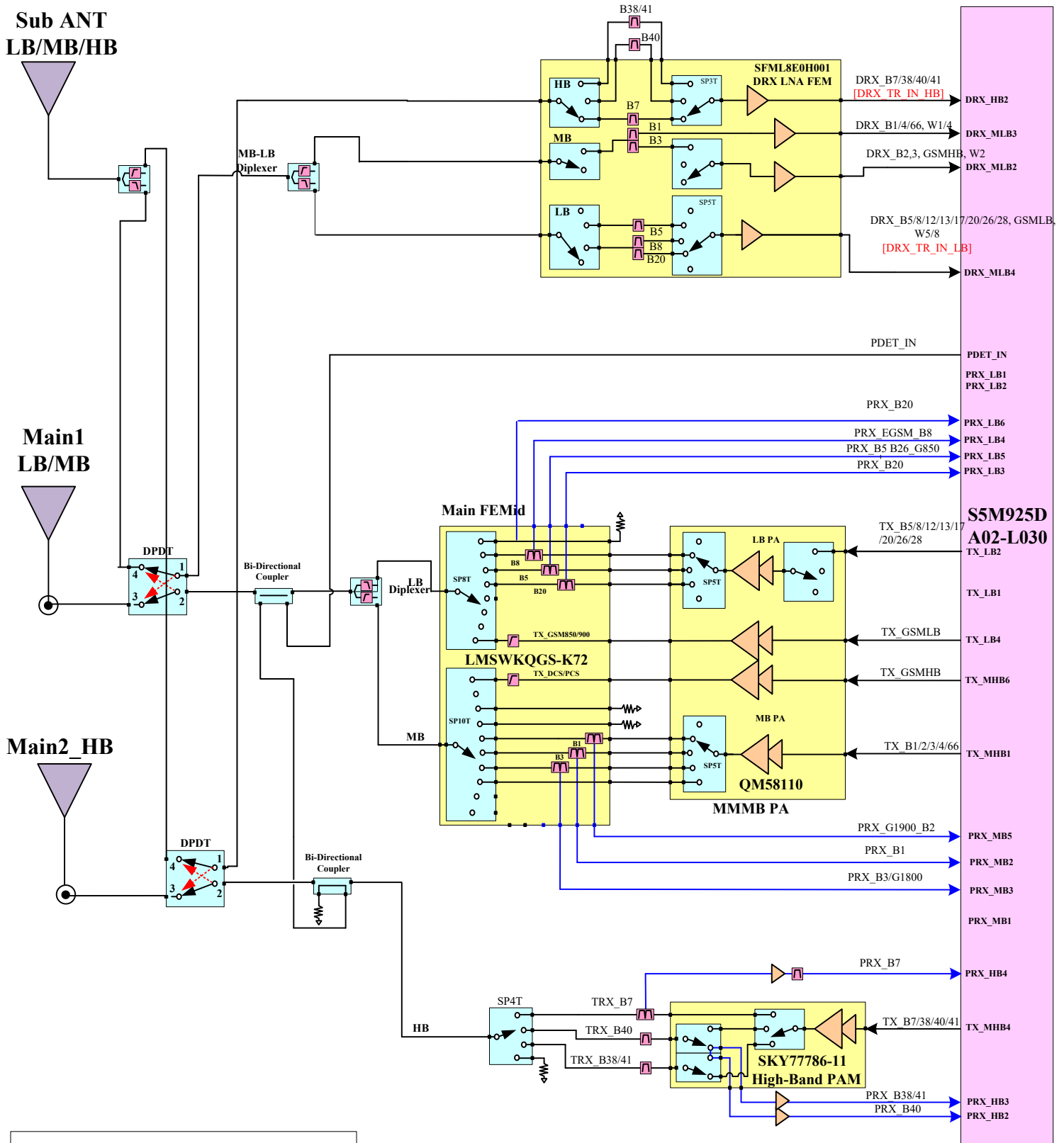
SUB PBA (TOP SIDE)



SUB PBA (BOTTOM SIDE)

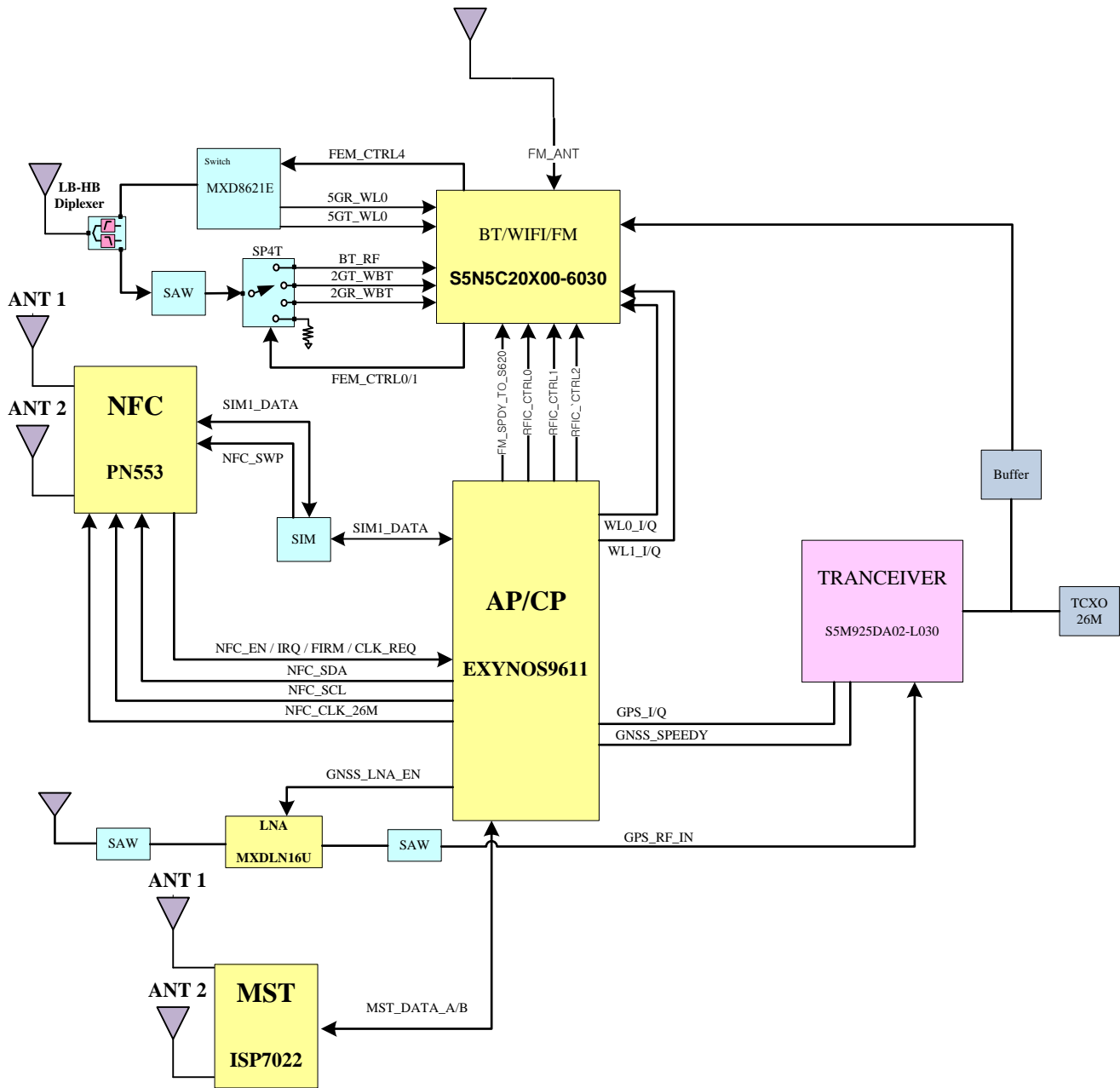


SM-A515F/DSM RF Block Diagram REV1.0



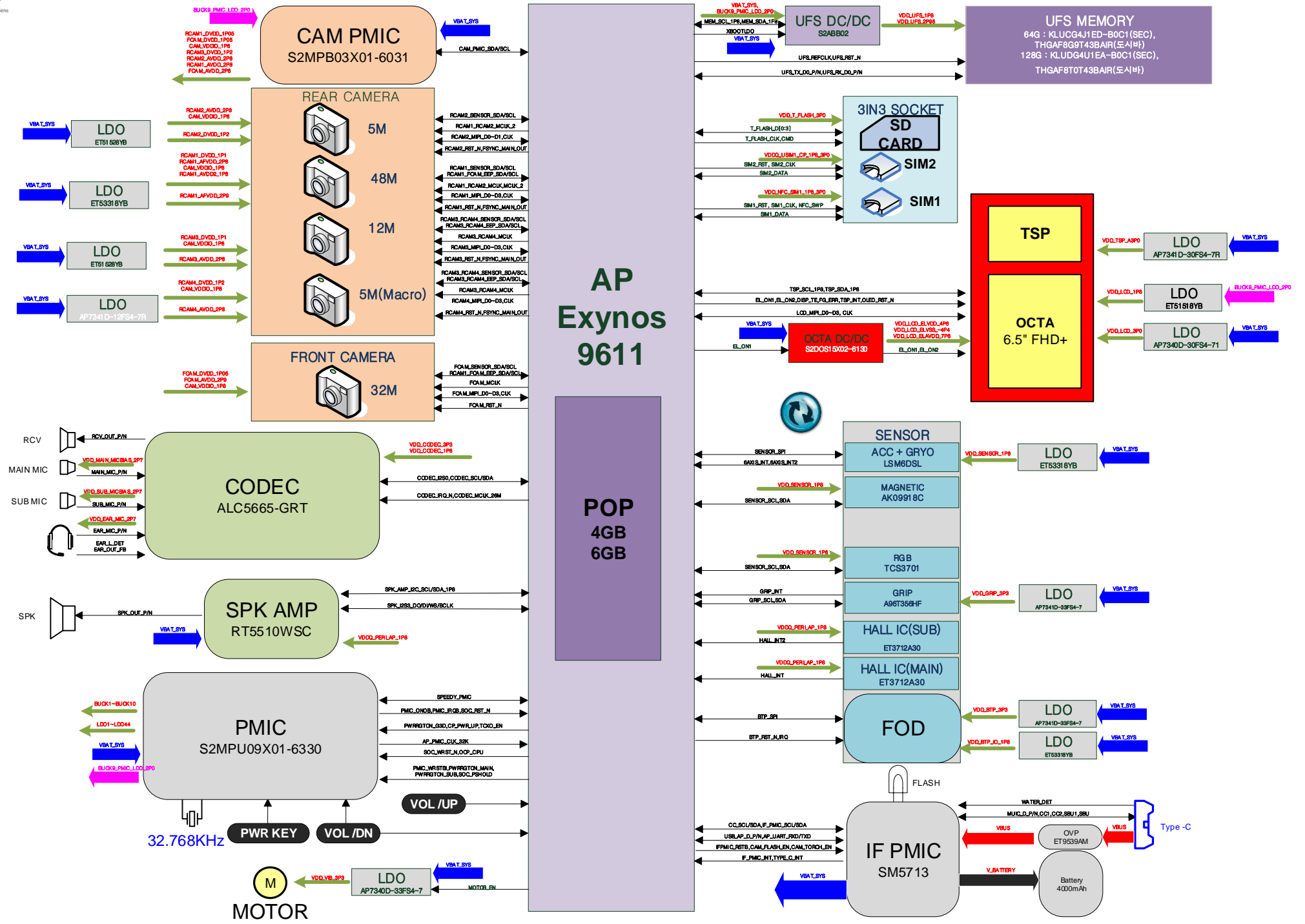
[SM-A515F/DSM RF Band]
 2G : Quad
 3G : W1,W2,W4,W5,W8
 LTE FDD : B1/2/3/4/5/7/8/12/13
 17/20/26/28
 LTE TDD : B38/40/41

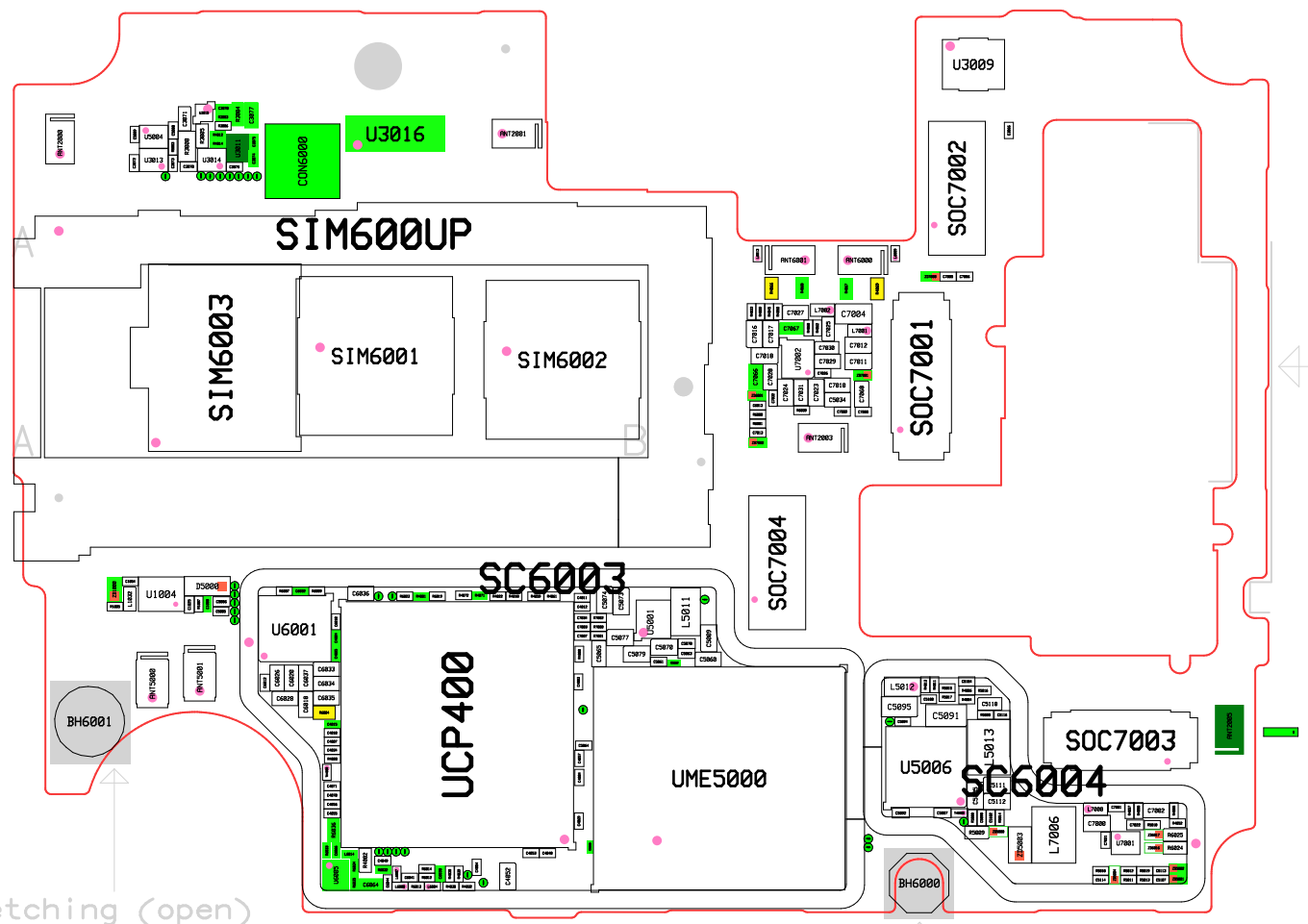
SM-A515F/DSM Connectivity Block Diagram



SM-A515F/DSM BB Block Diagram

SAMSUNG CONFIDENTIAL
 THIS DOCUMENT CONTAINS CONFIDENTIAL
 INFORMATION. ANY INFORMATION THAT
 SAMSUNG HAS OBTAINED FROM YOU OR
 FROM ANY OTHER SOURCE, INCLUDING
 BUT NOT LIMITED TO, YOUR COMMENTS,
 EXCEPT AS AUTHORIZED BY SAMSUNG.





SIM600UP

SIM6003

SIM6001

SIM6002

CON6000

U3016

U3009

SOC7002

SOC7001

SOC7004

SC6003

UCP400

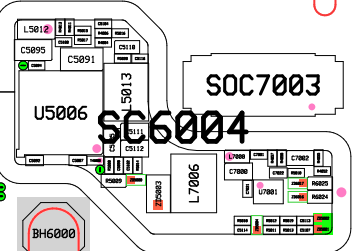
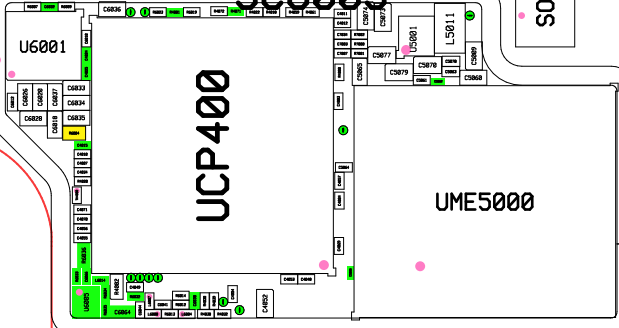
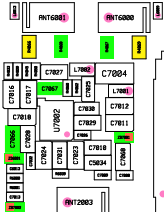
UME5000

SOC7000

SC6004

SOC7003

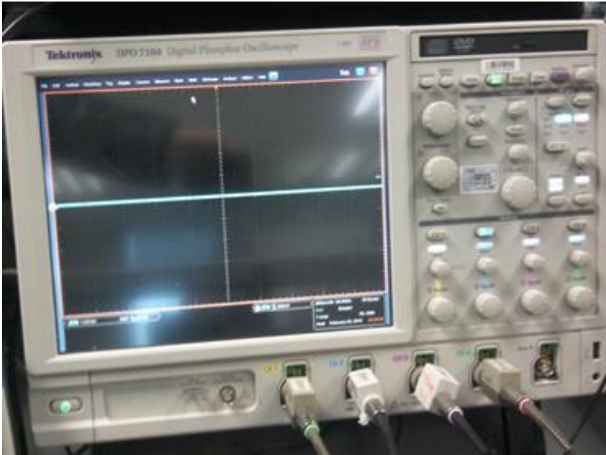
U5006



atching (open)

8. Level 3 Repair

8-3. Flow chart of Troubleshooting.



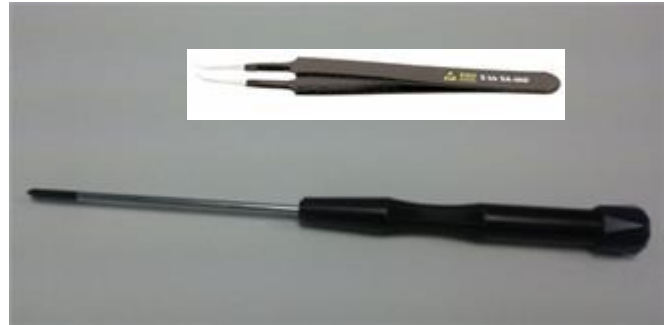
Oscilloscope



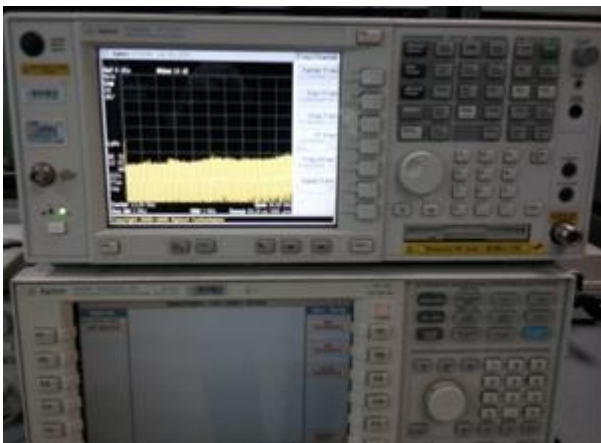
Digital Multimeter



Power Supply



+ driver, ESD Safe Tweezer



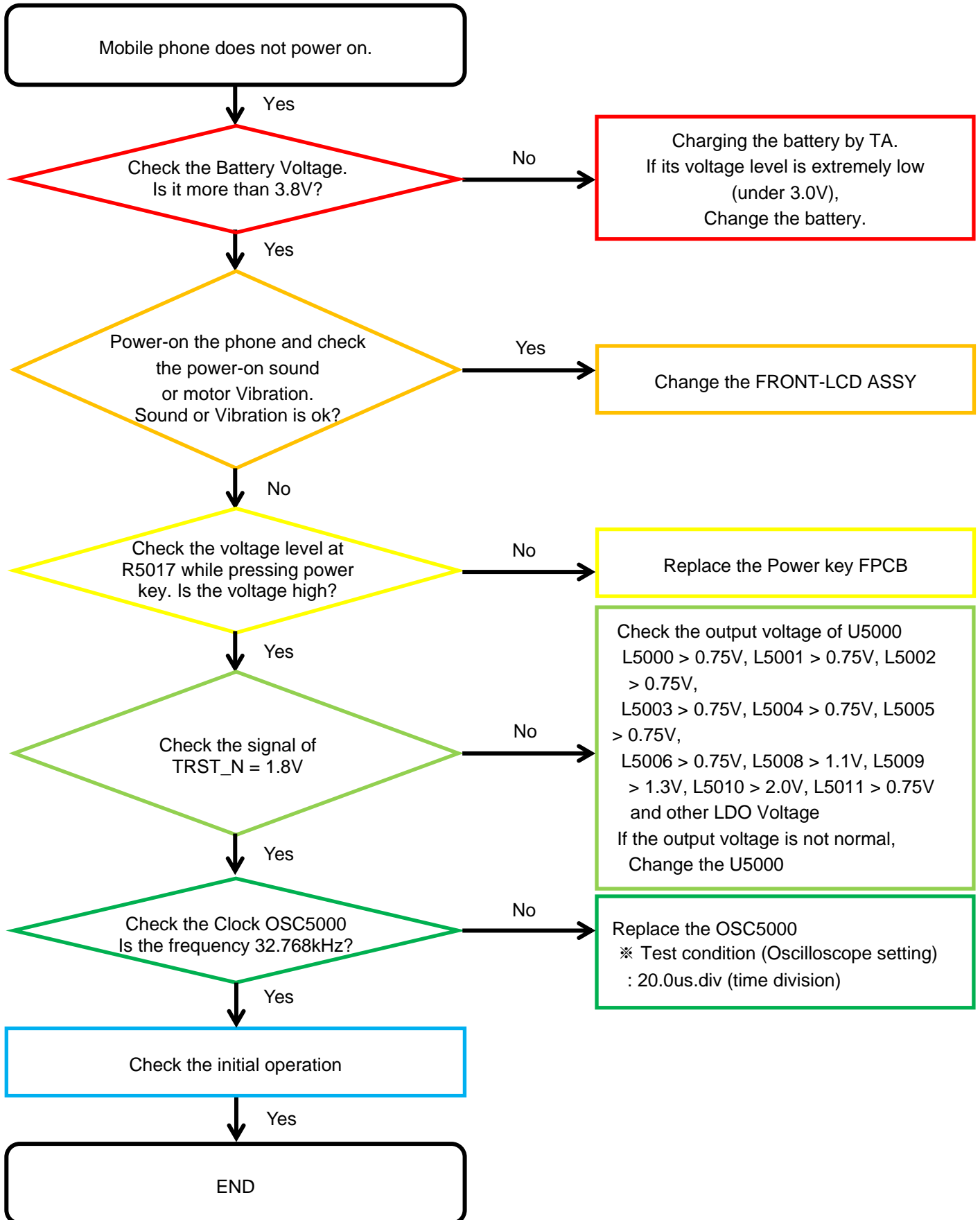
8960 & Spectrum Analyzer



Soldering iron

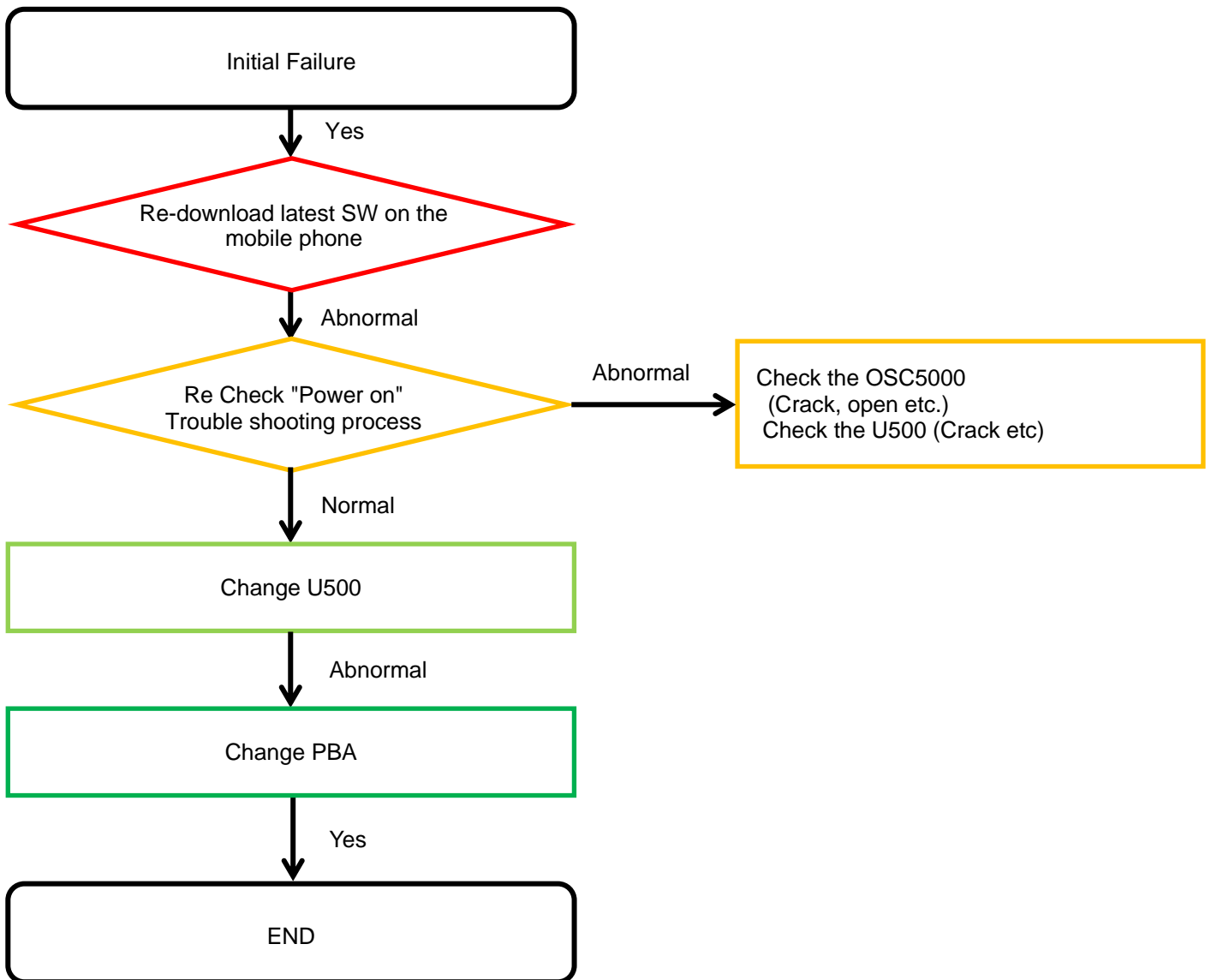
8. Level 3 Repair

8-4-1. Power On



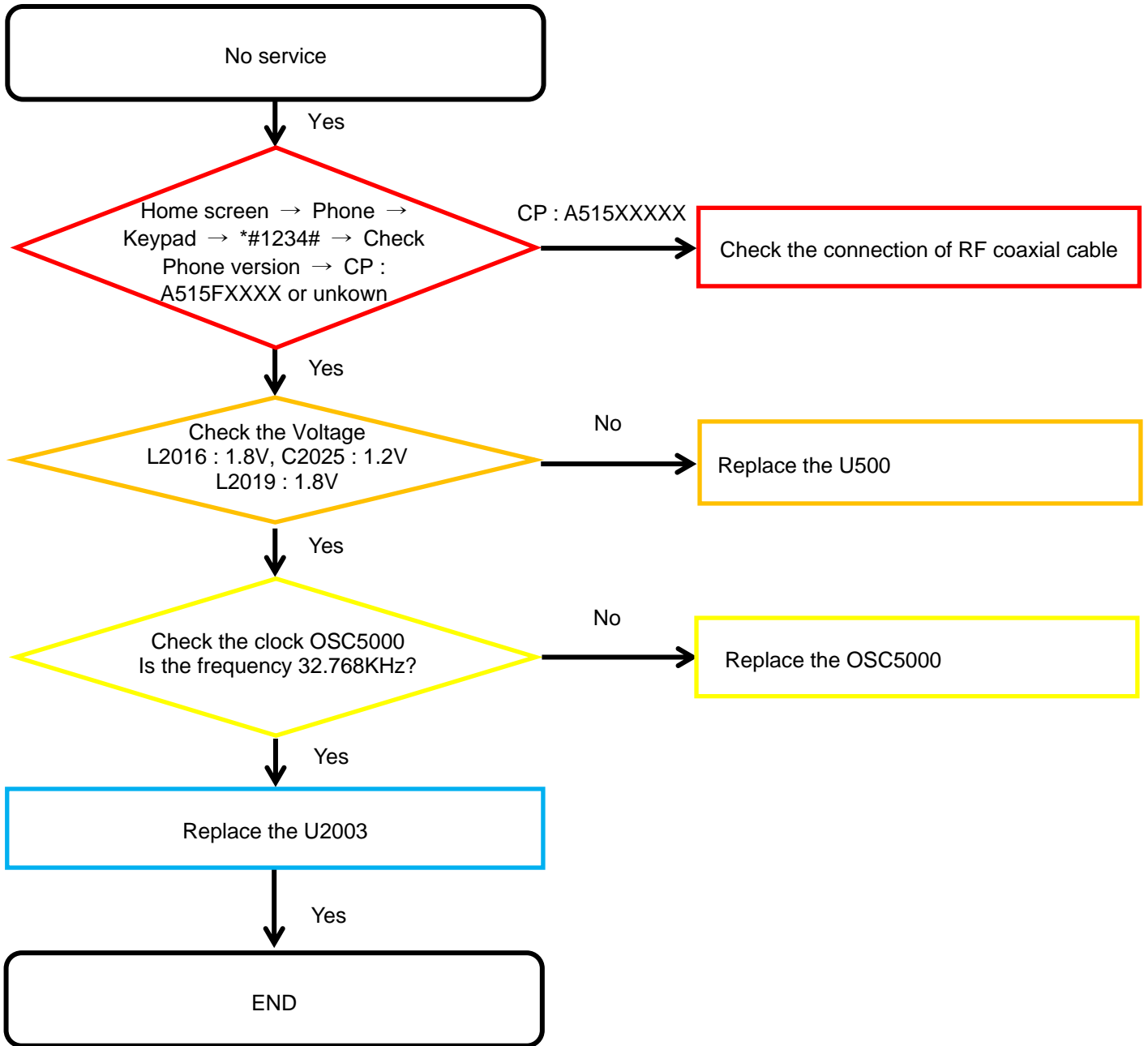
8. Level 3 Repair

8-4-2. Initial



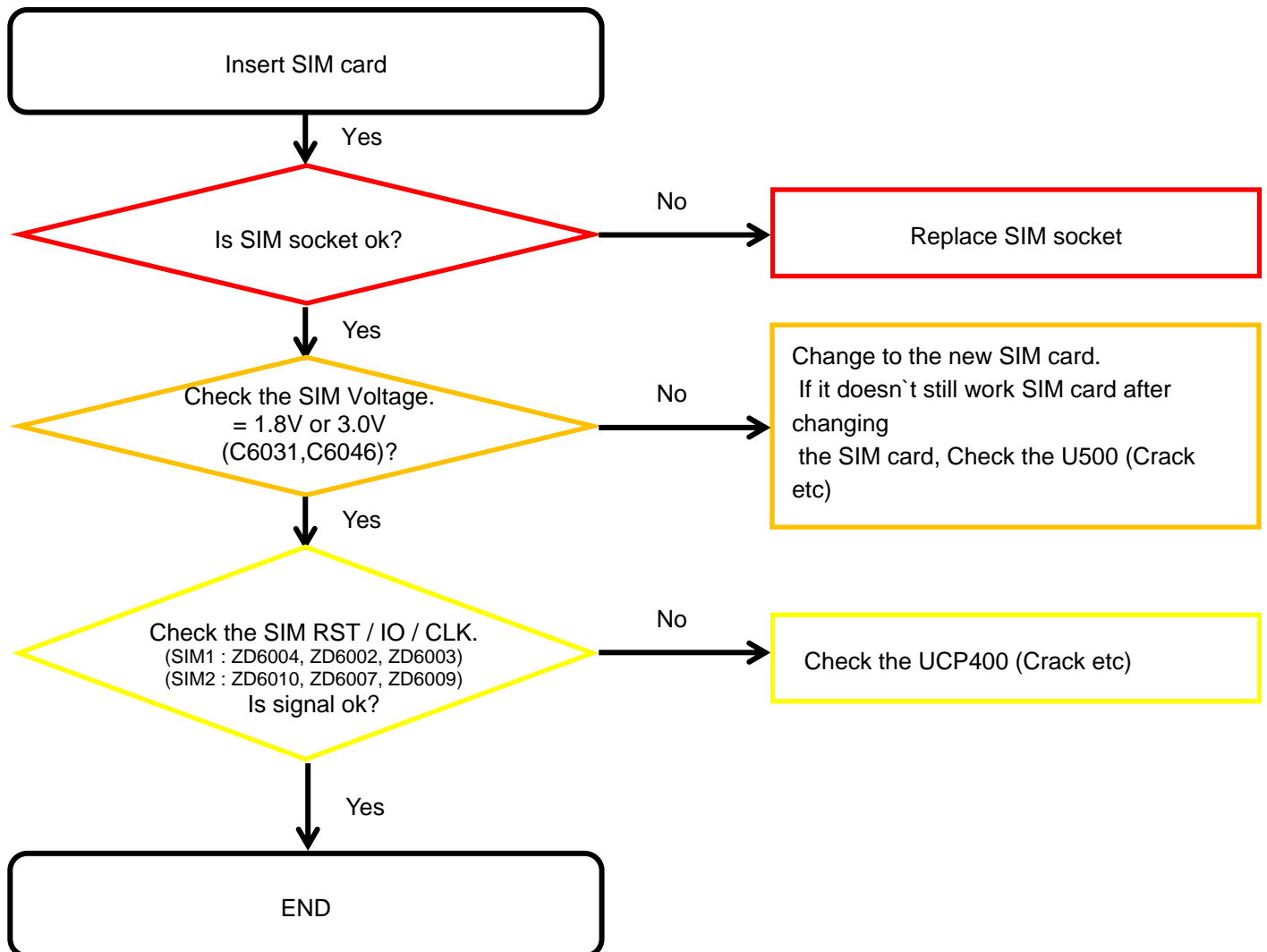
8. Level 3 Repair

8-4-3. No Service



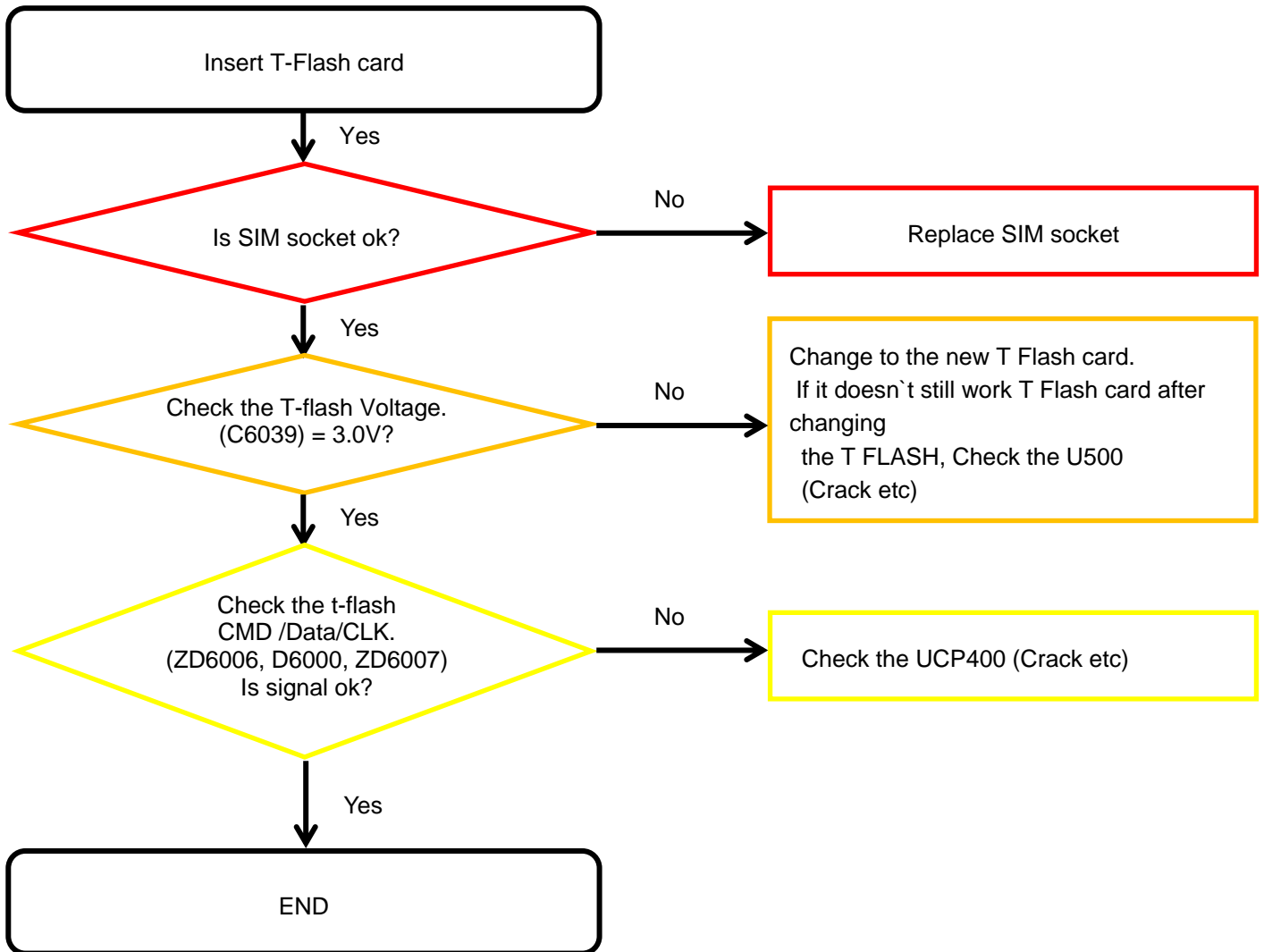
8. Level 3 Repair

8-4-4. SIM Part



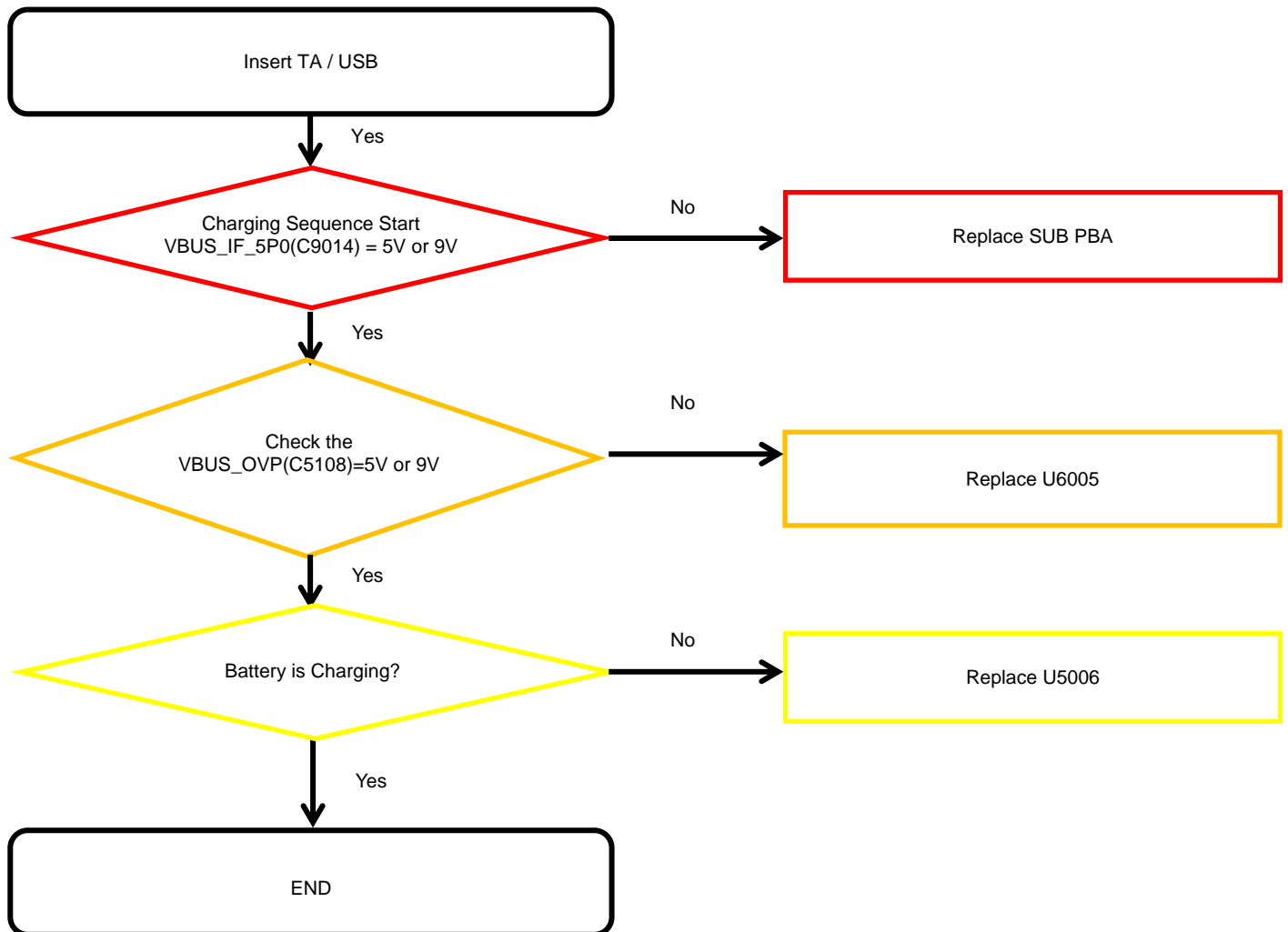
8. Level 3 Repair

8-4-5. T-Flash Part



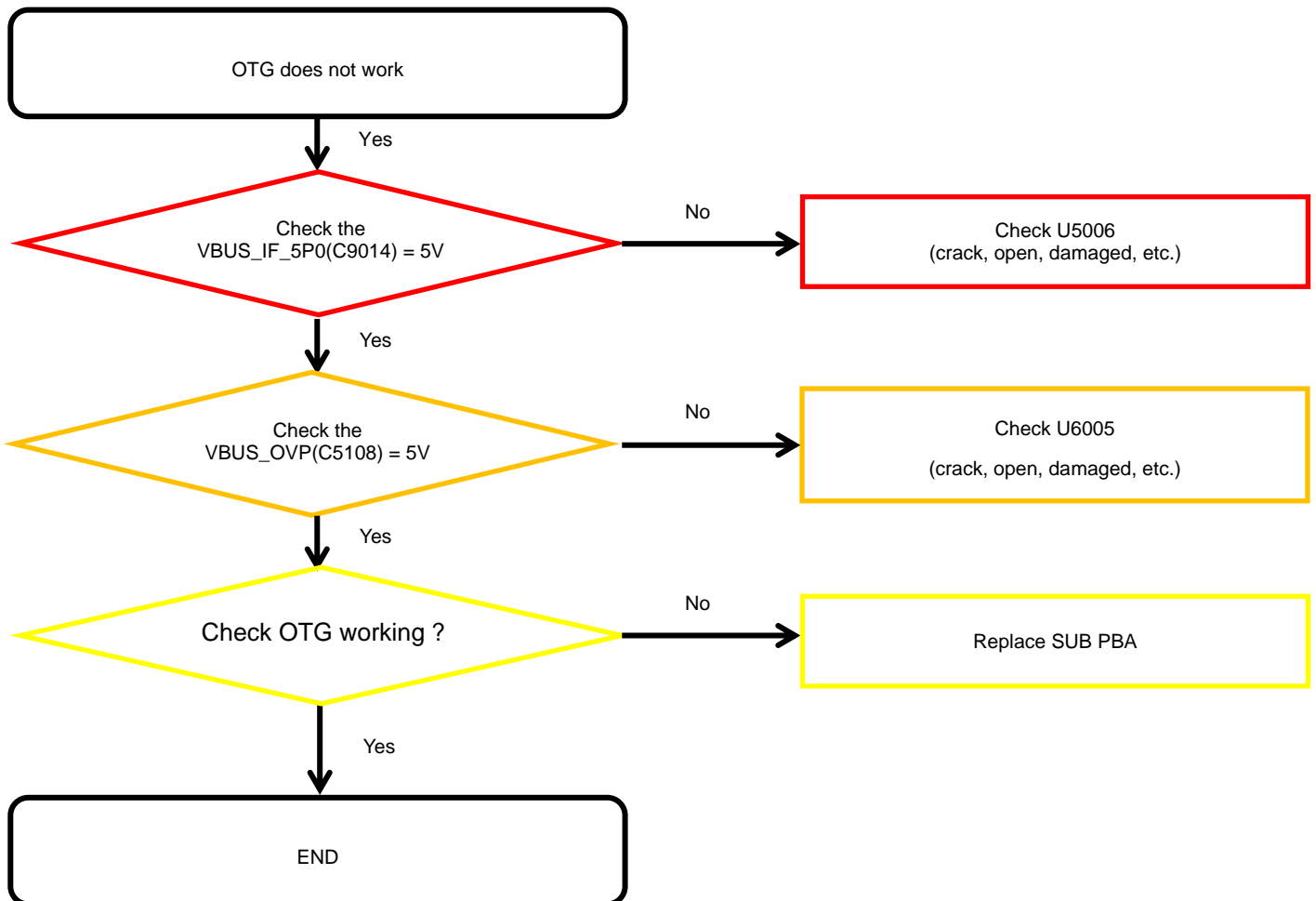
8. Level 3 Repair

8-4-6. Cable Charging Part



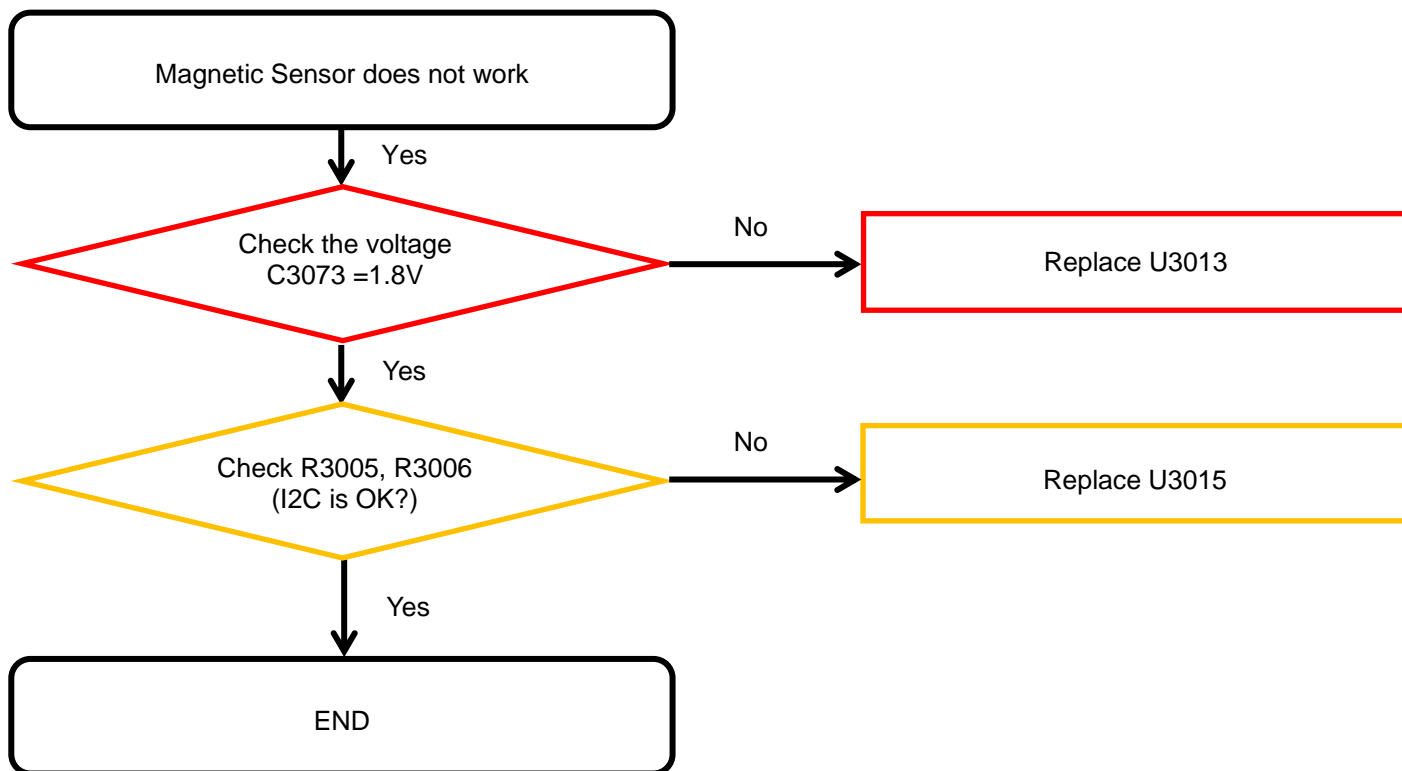
8. Level 3 Repair

8-4-7. OTG



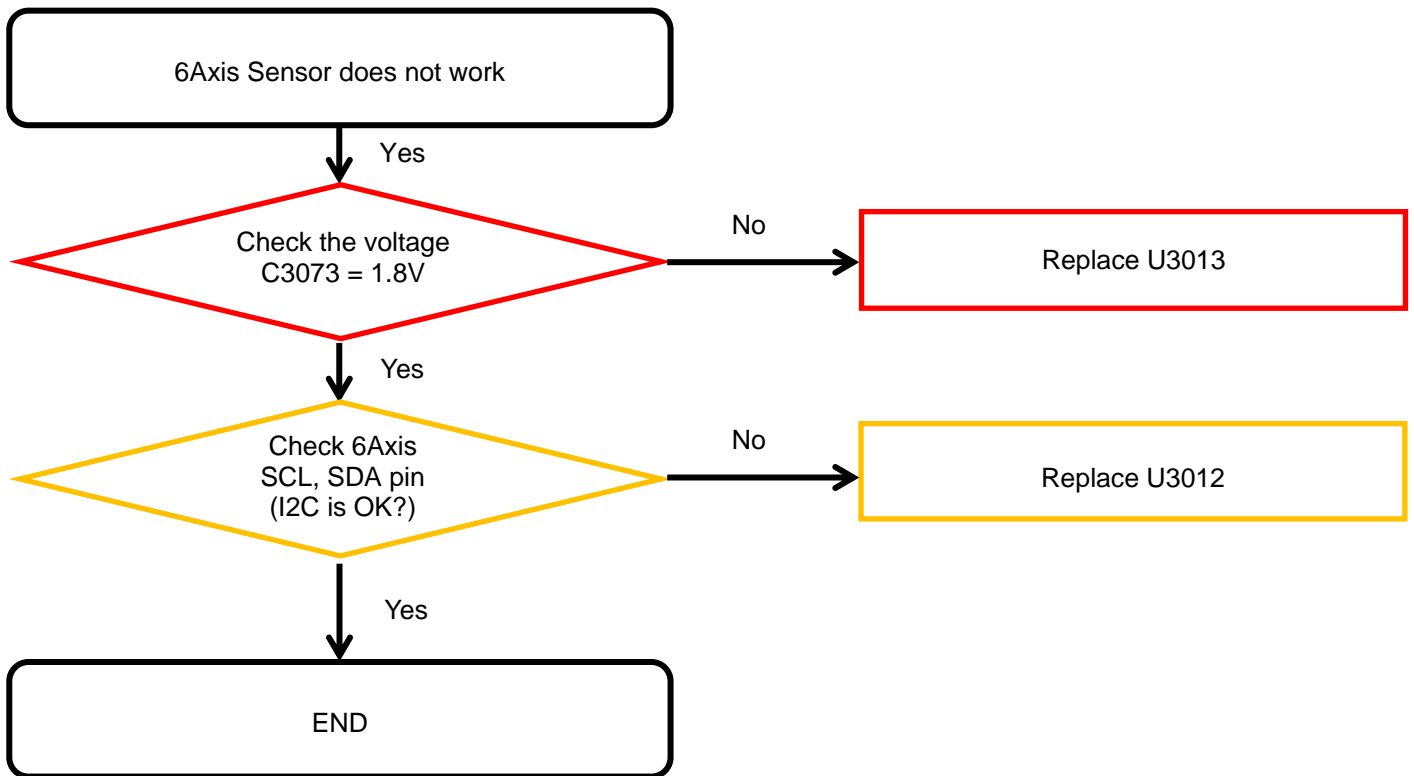
8. Level 3 Repair

8-4-8-1. Magnetic Sensor



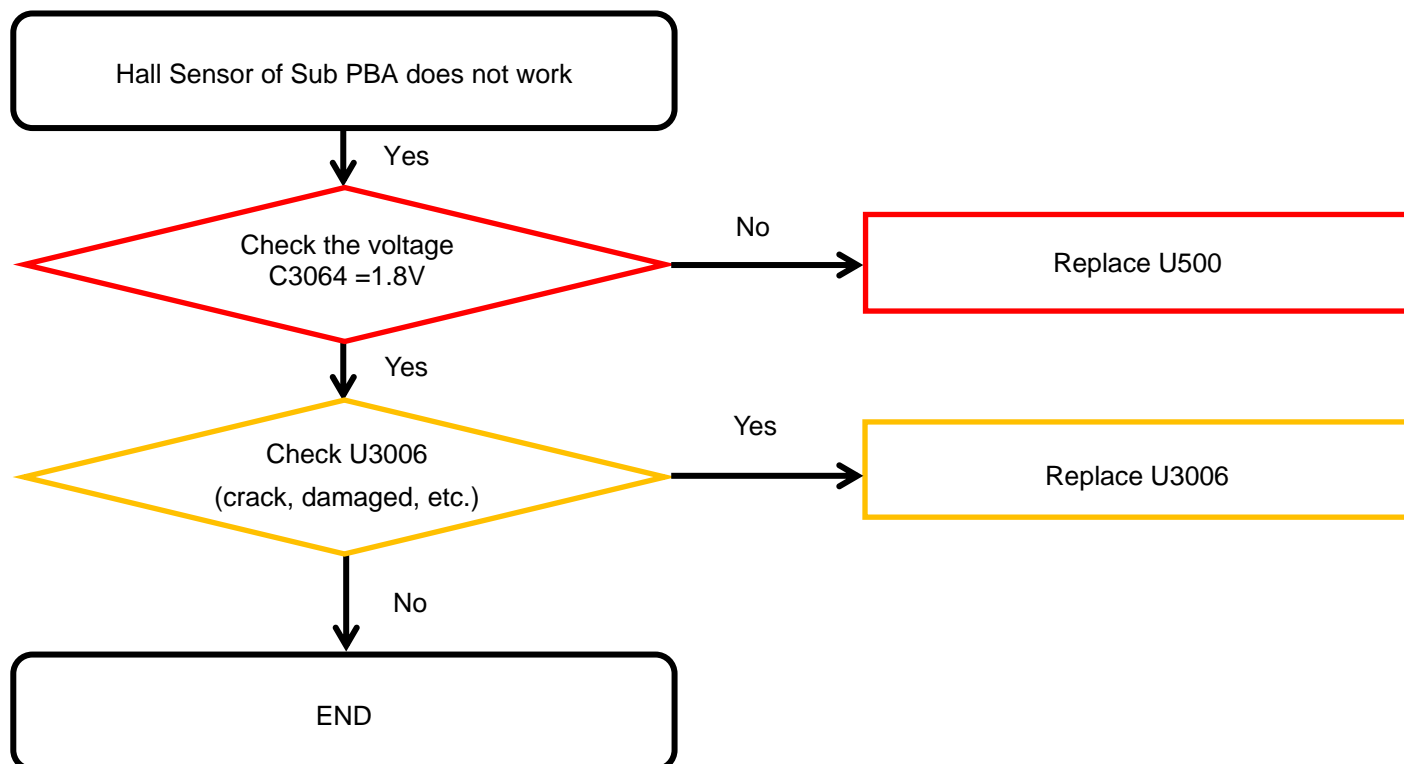
8. Level 3 Repair

8-4-8-2. 6Axis Sensor



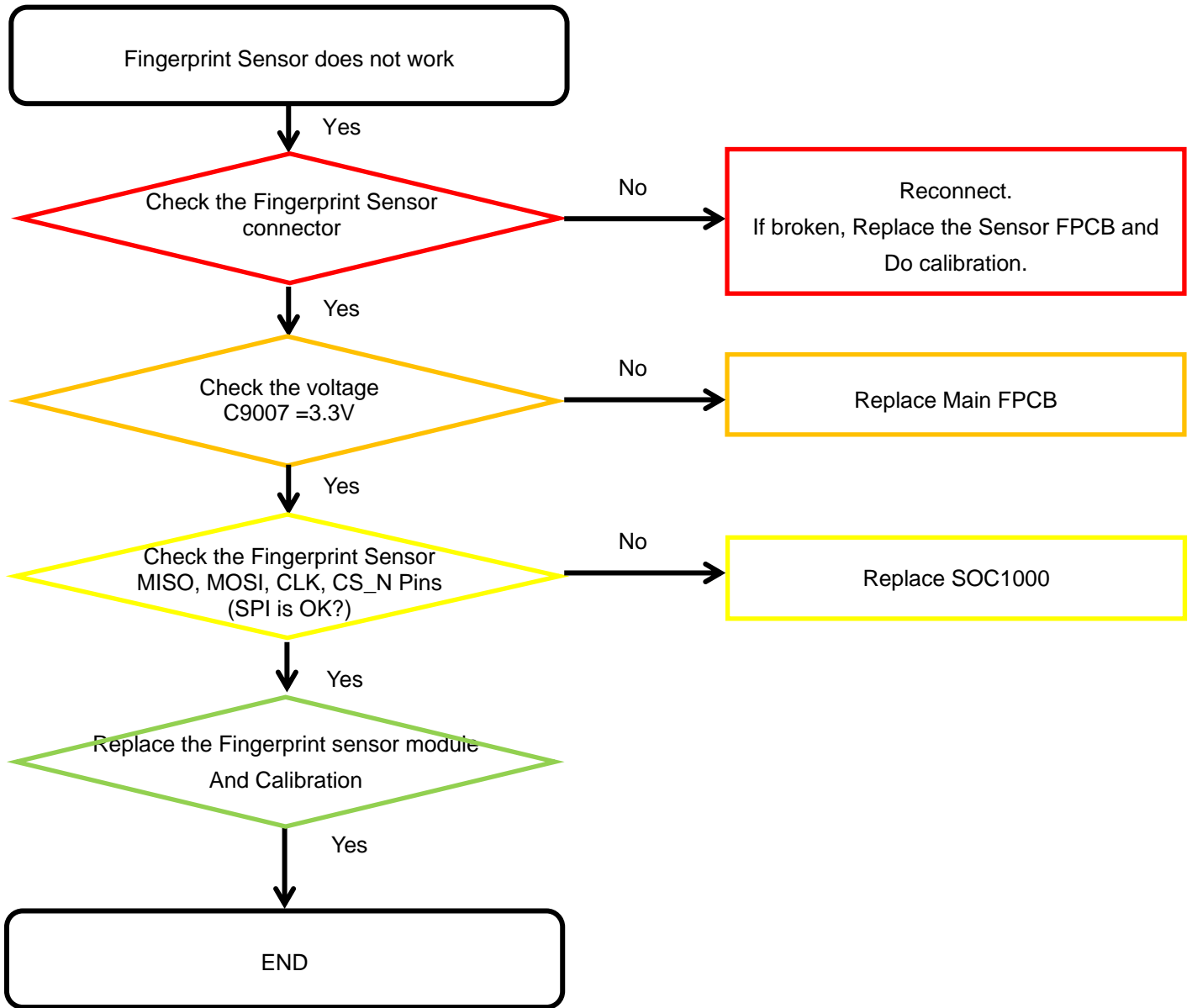
8. Level 3 Repair

8-4-8-3. Hall Sensor



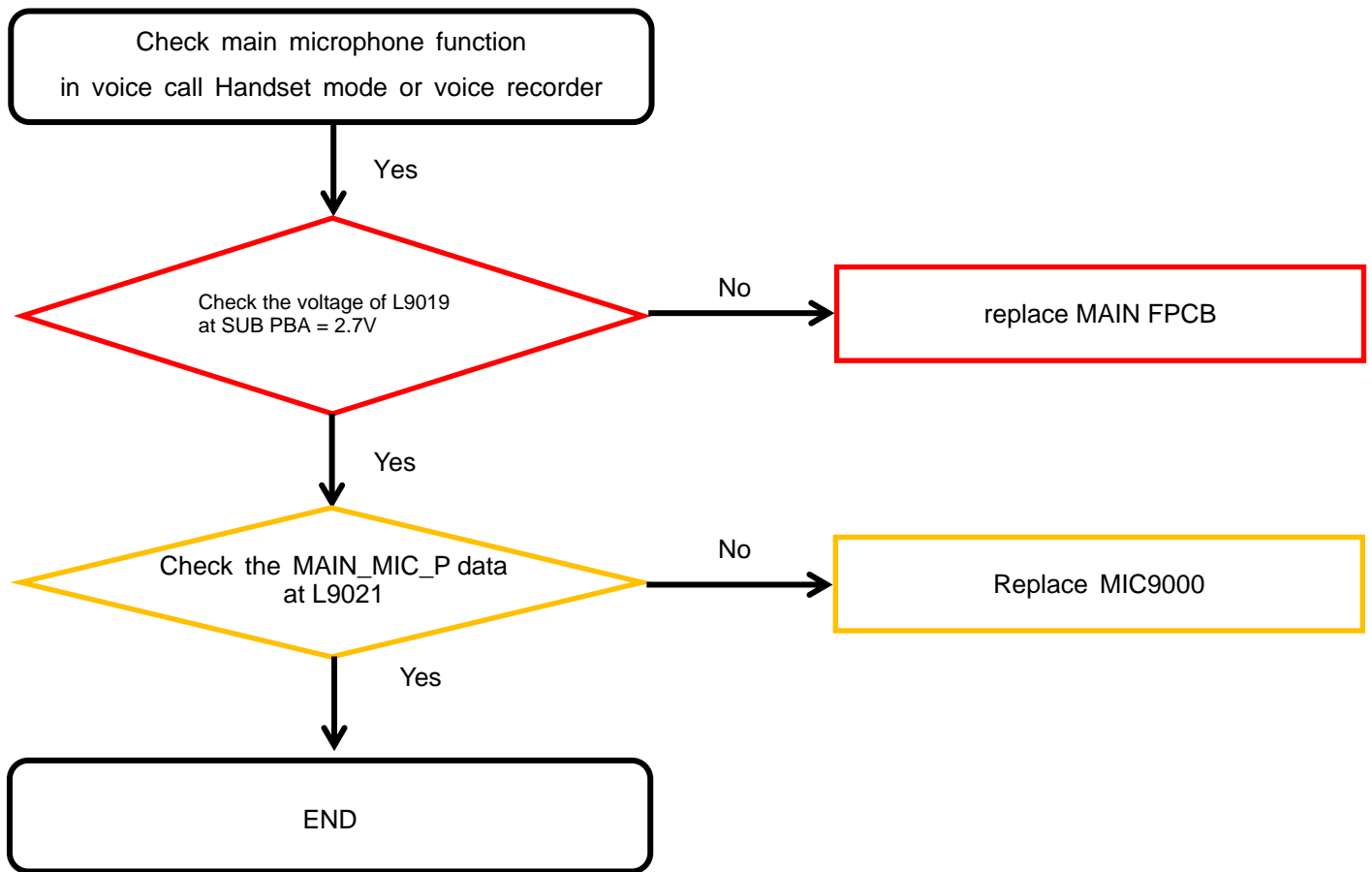
8. Level 3 Repair

8-4-8-4. Fingerprint Sensor



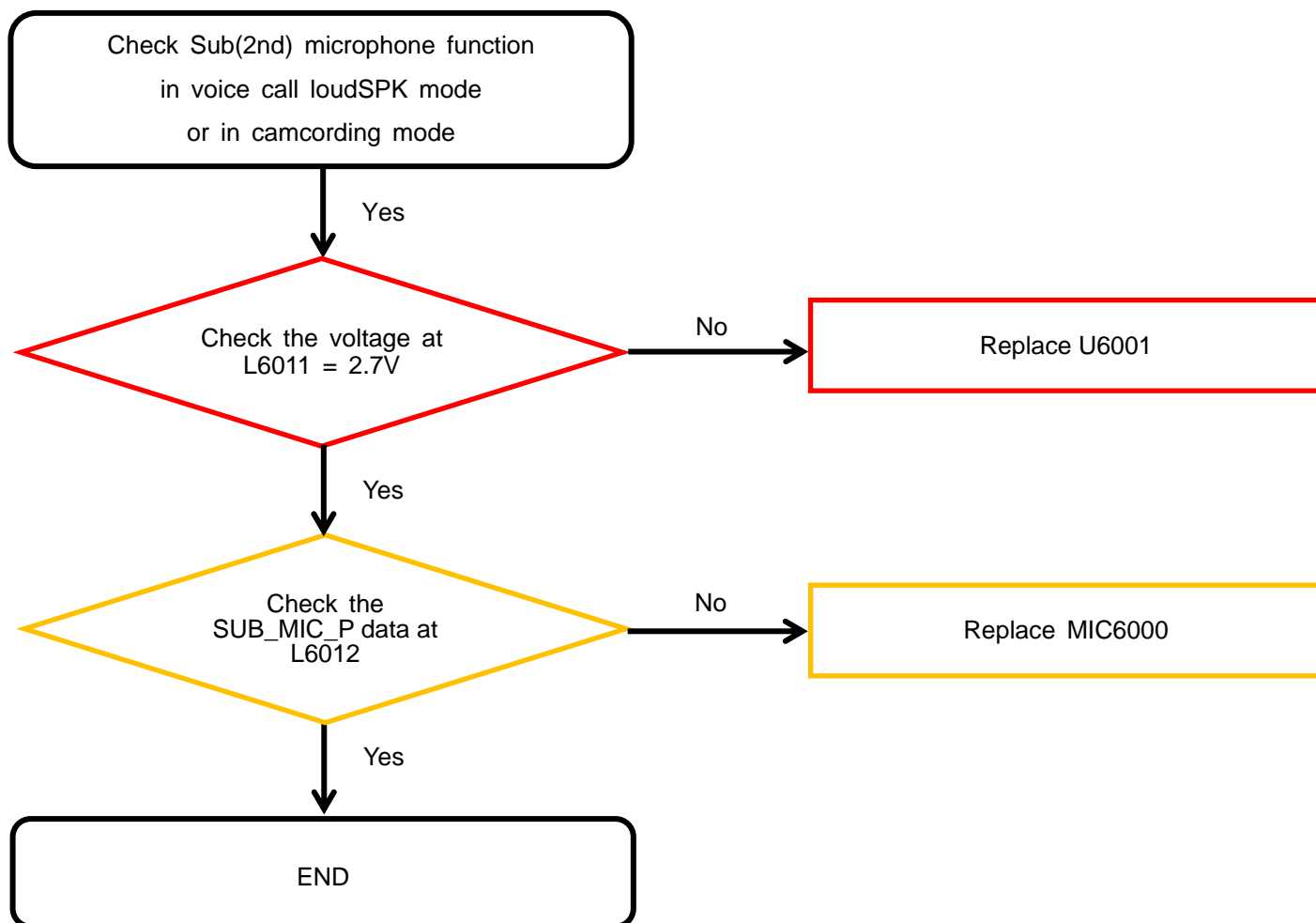
8. Level 3 Repair

8-4-9-1. Microphone Part - Main MIC



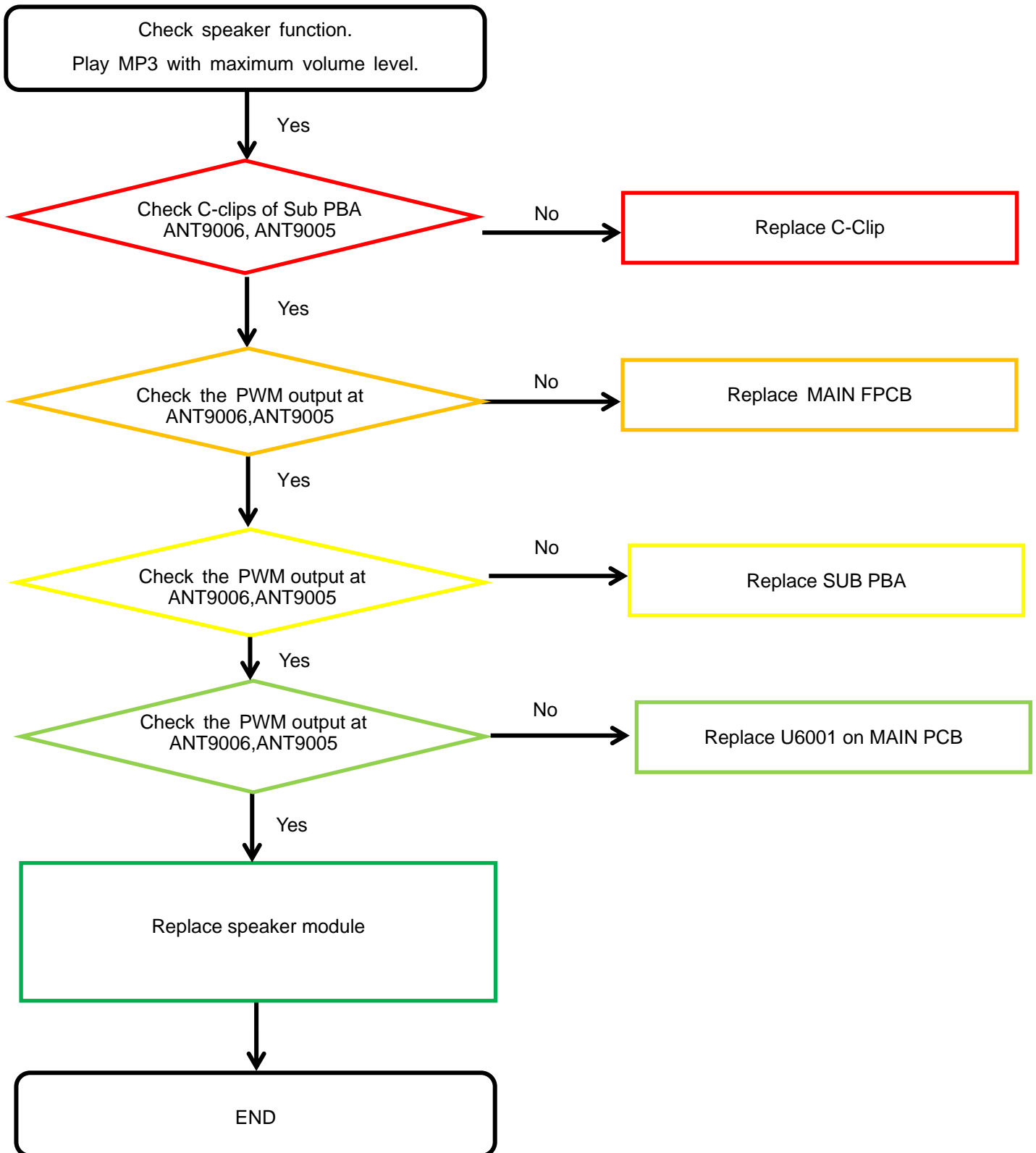
8. Level 3 Repair

8-4-9-2. Microphone Part - Sub(2nd) MIC



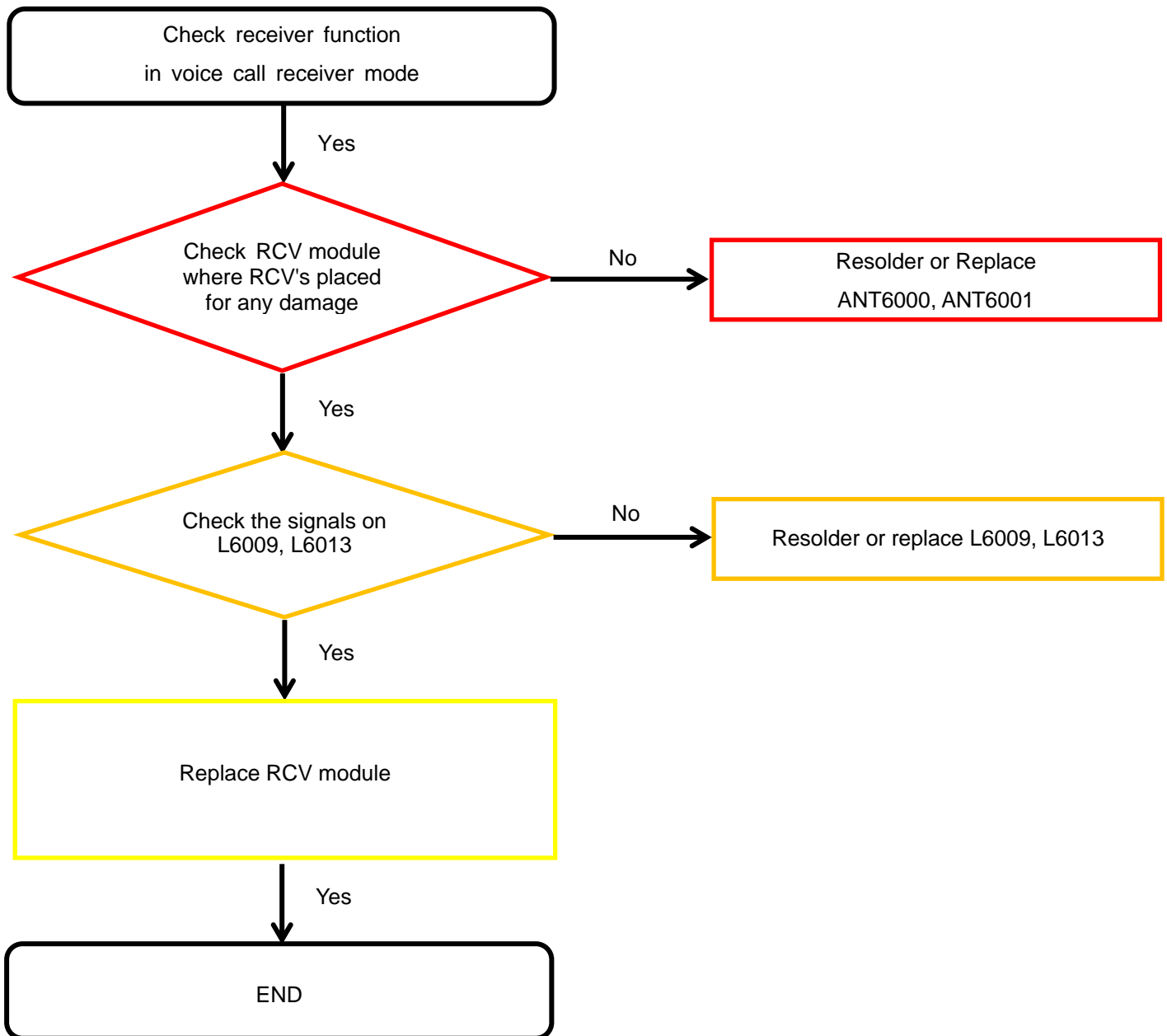
8. Level 3 Repair

8-4-10. Speaker Part



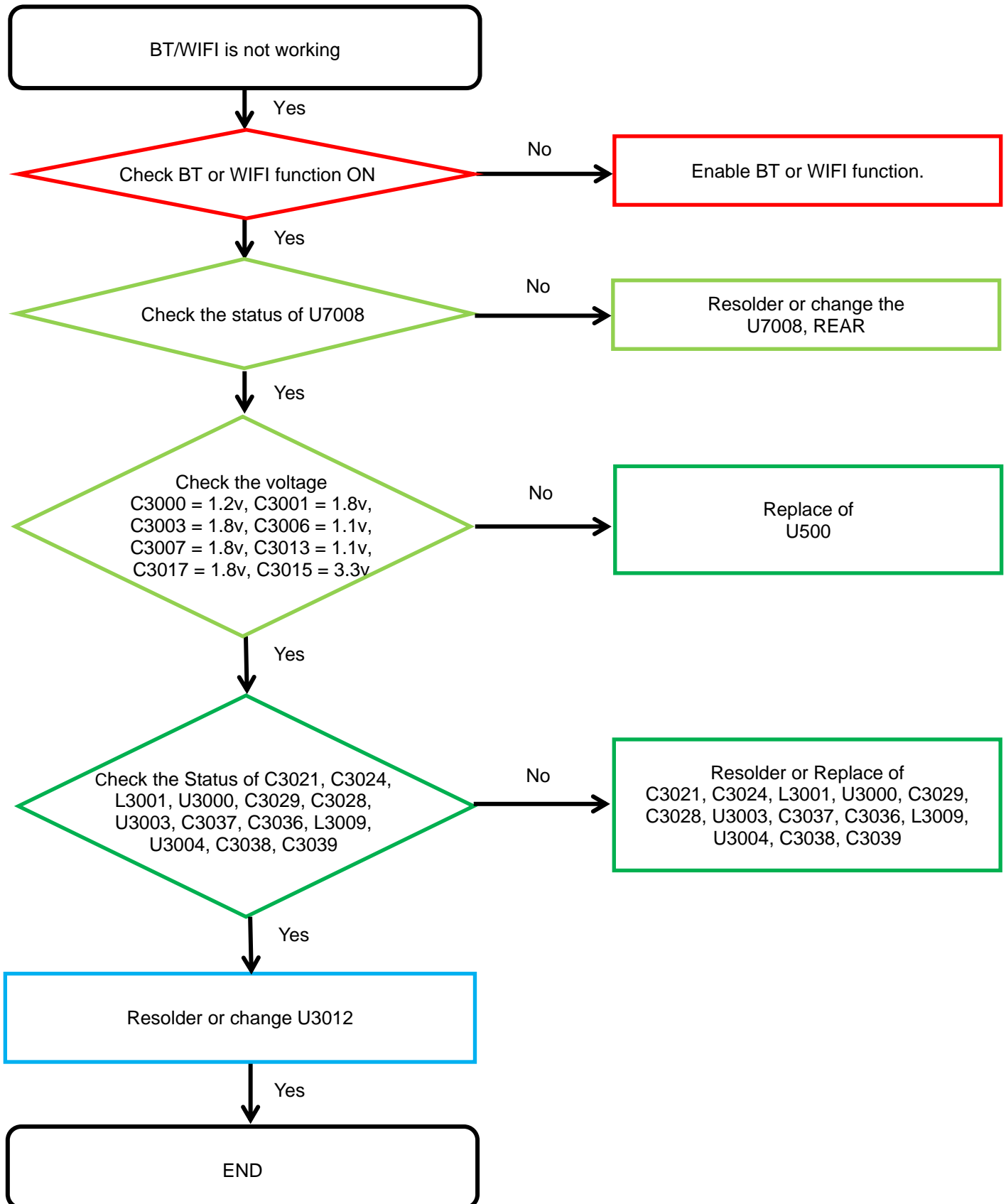
8. Level 3 Repair

8-4-11. Receiver Part



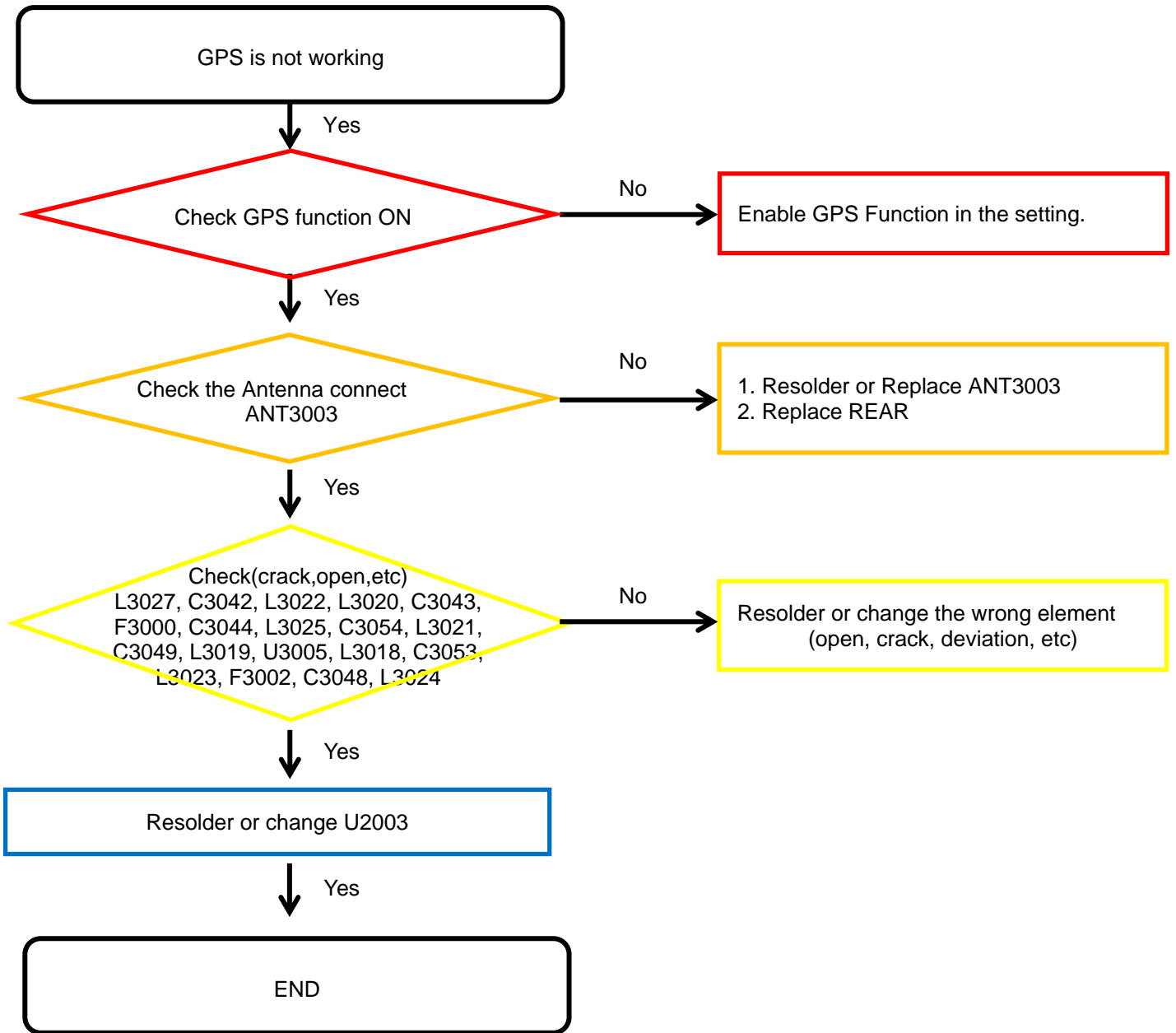
8. Level 3 Repair

8-4-12. BT/WIFI



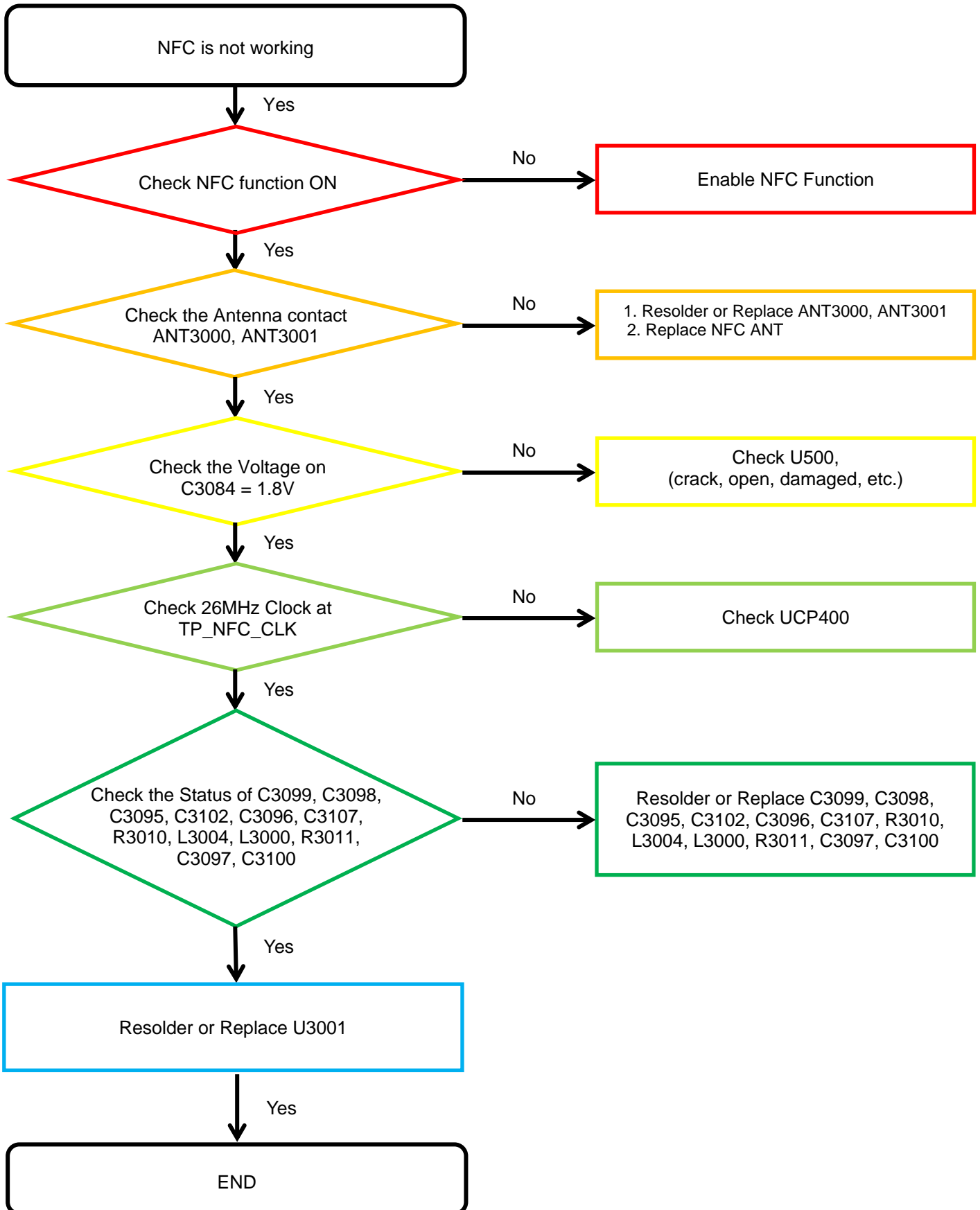
8. Level 3 Repair

8-4-13. GPS



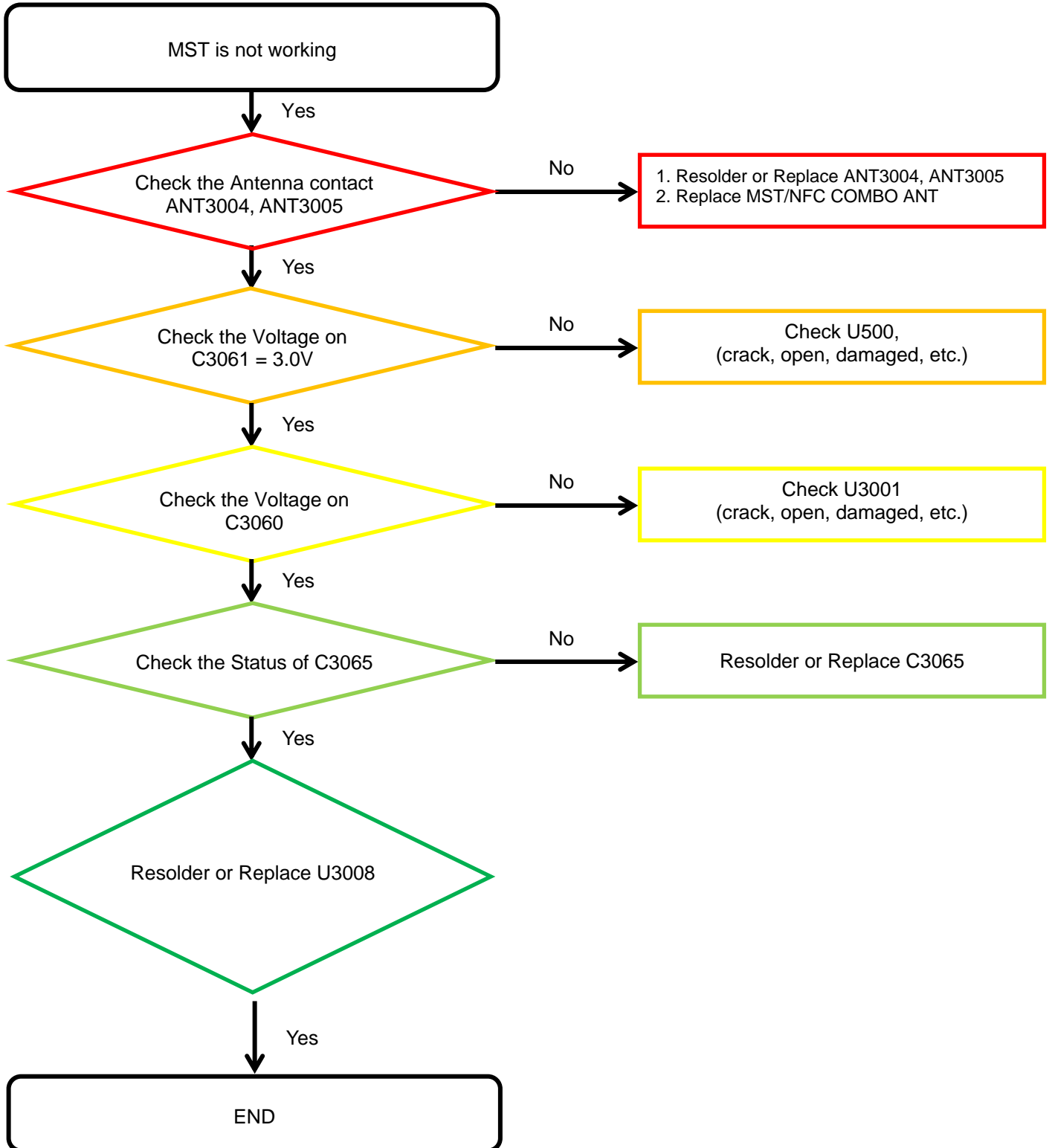
8. Level 3 Repair

8-4-14. NFC



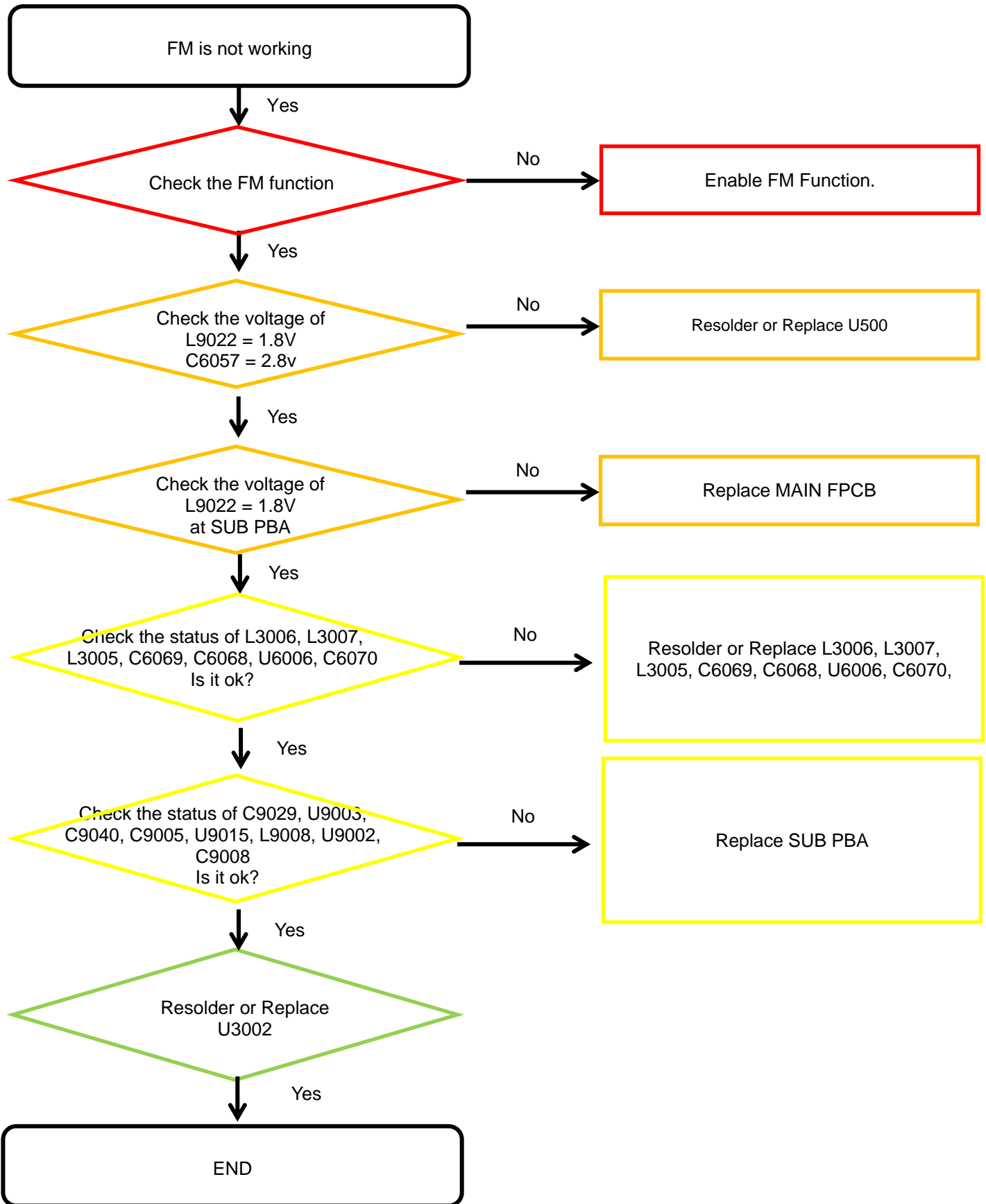
8. Level 3 Repair

8-4-15. MST



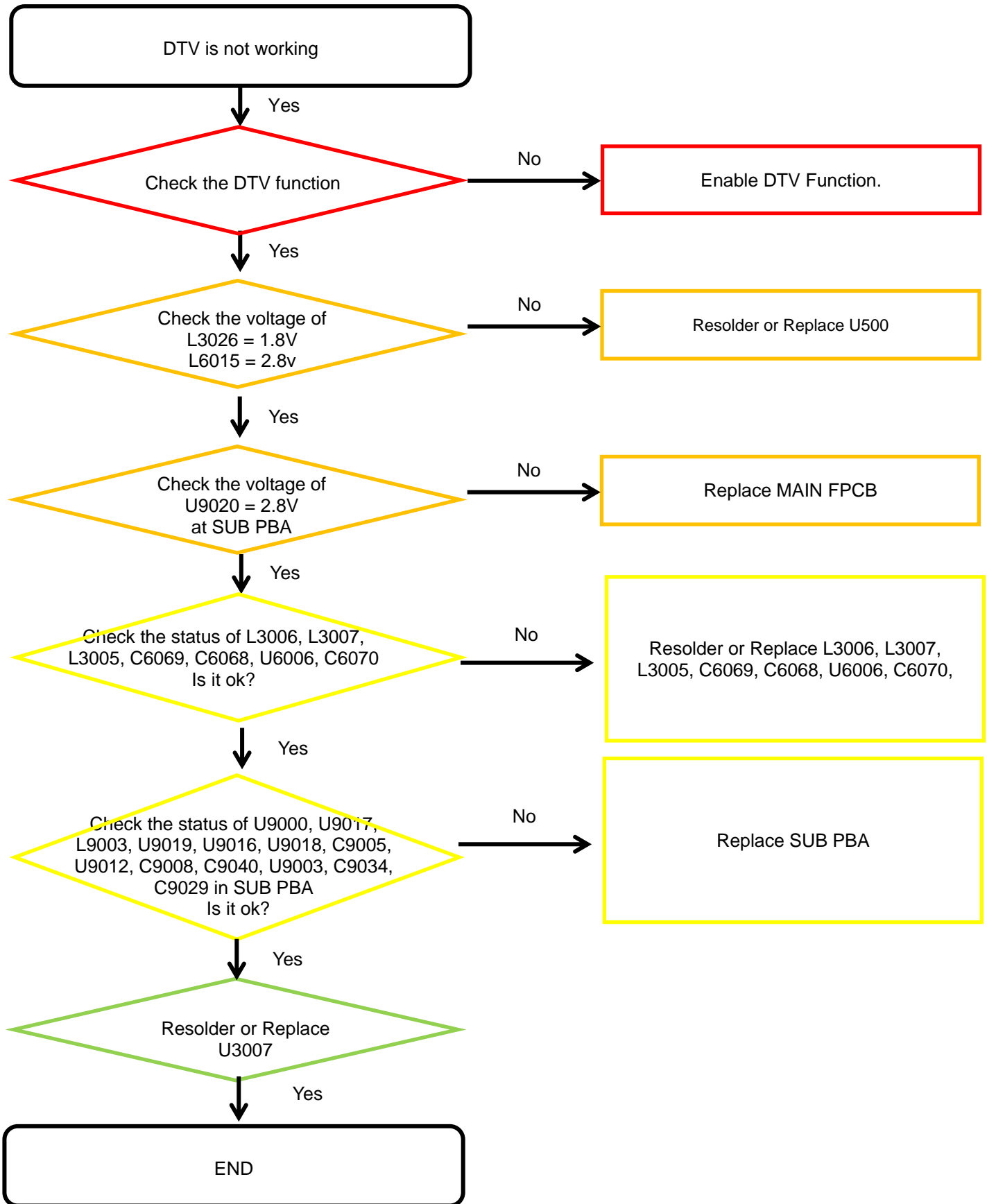
8. Level 3 Repair

8-4-16. FM radio part



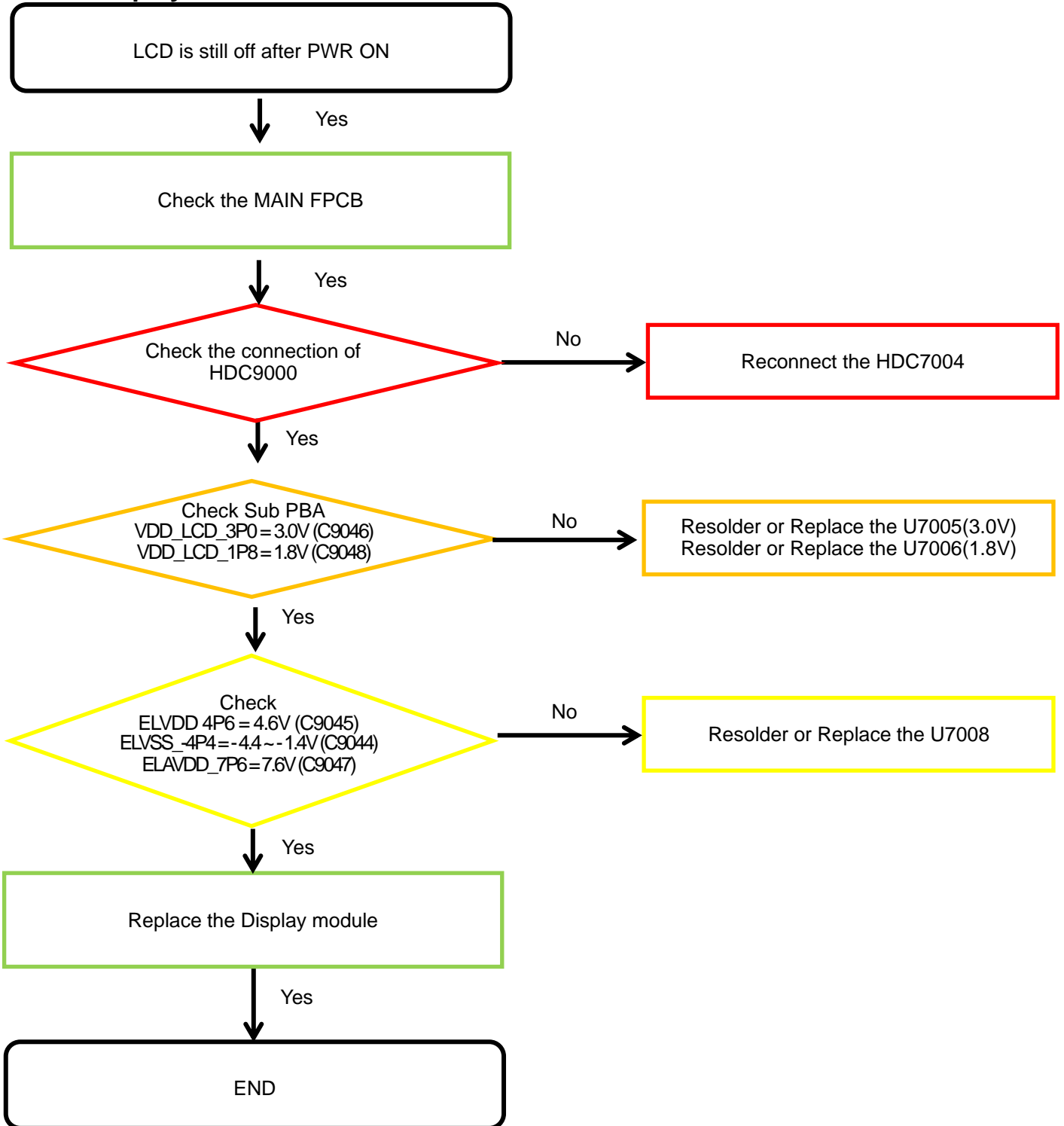
8. Level 3 Repair

8-4-17. DTV



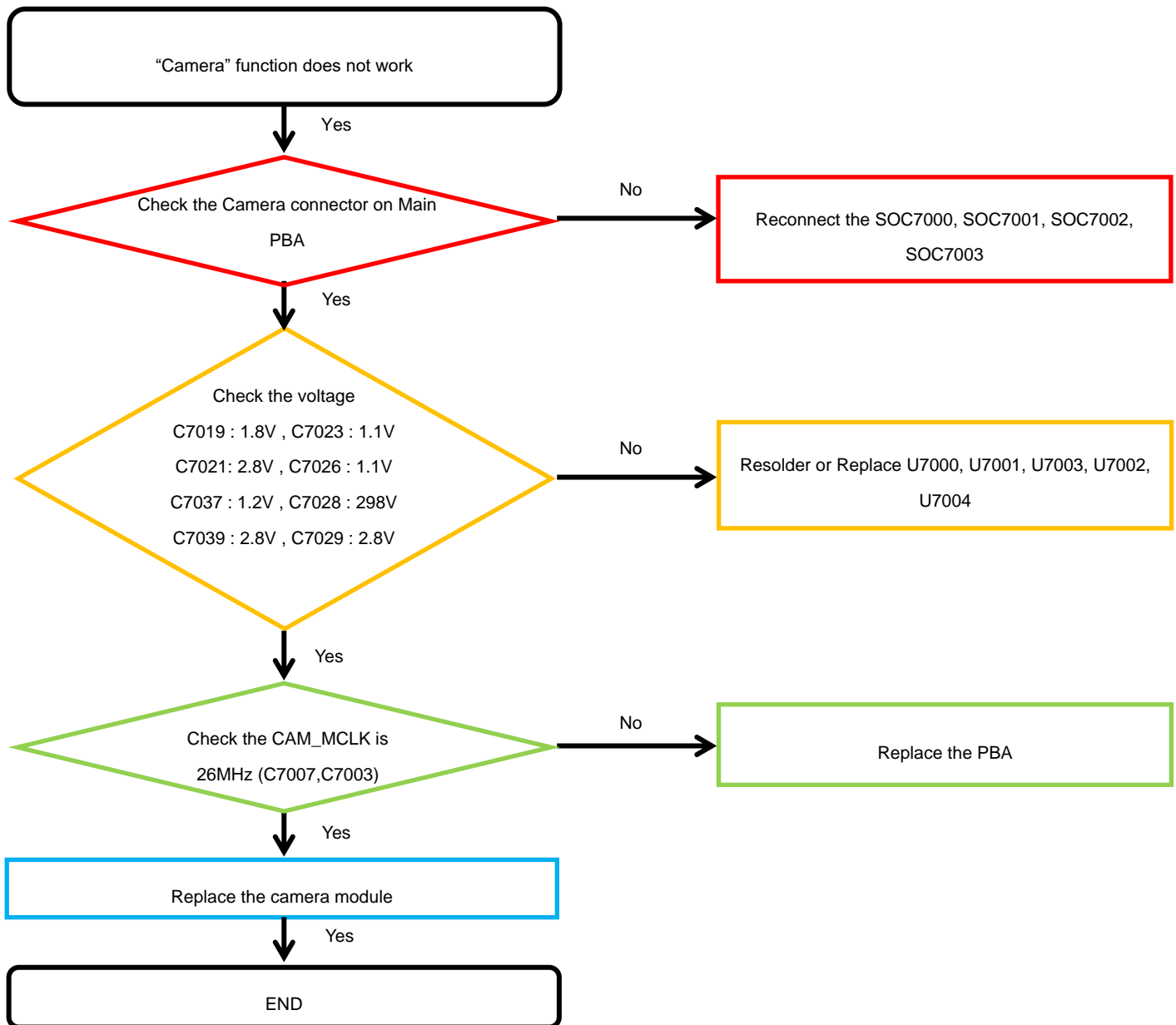
8. Level 3 Repair

8-4-18. Display



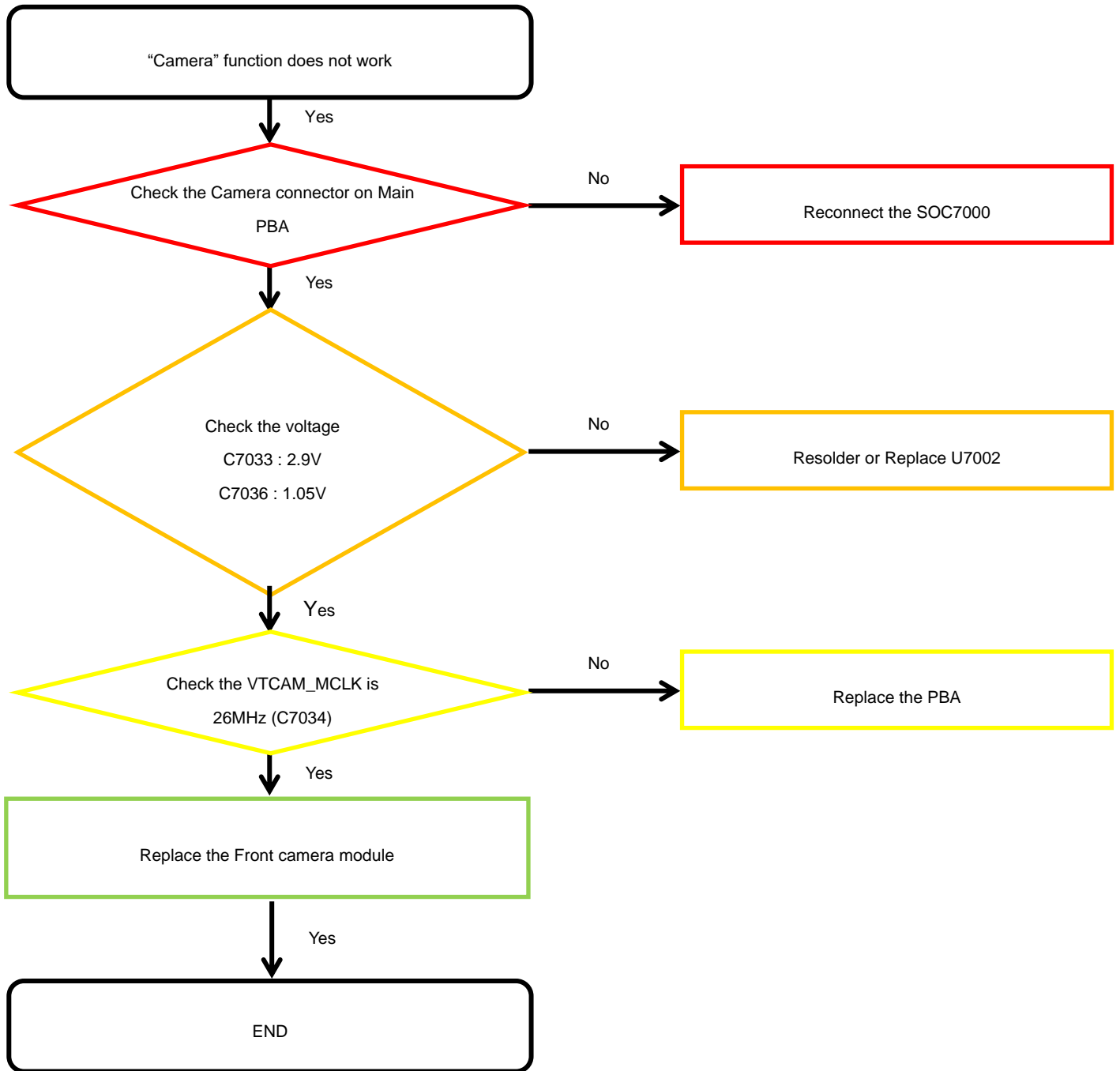
8. Level 3 Repair

8-4-19. Quad Camera



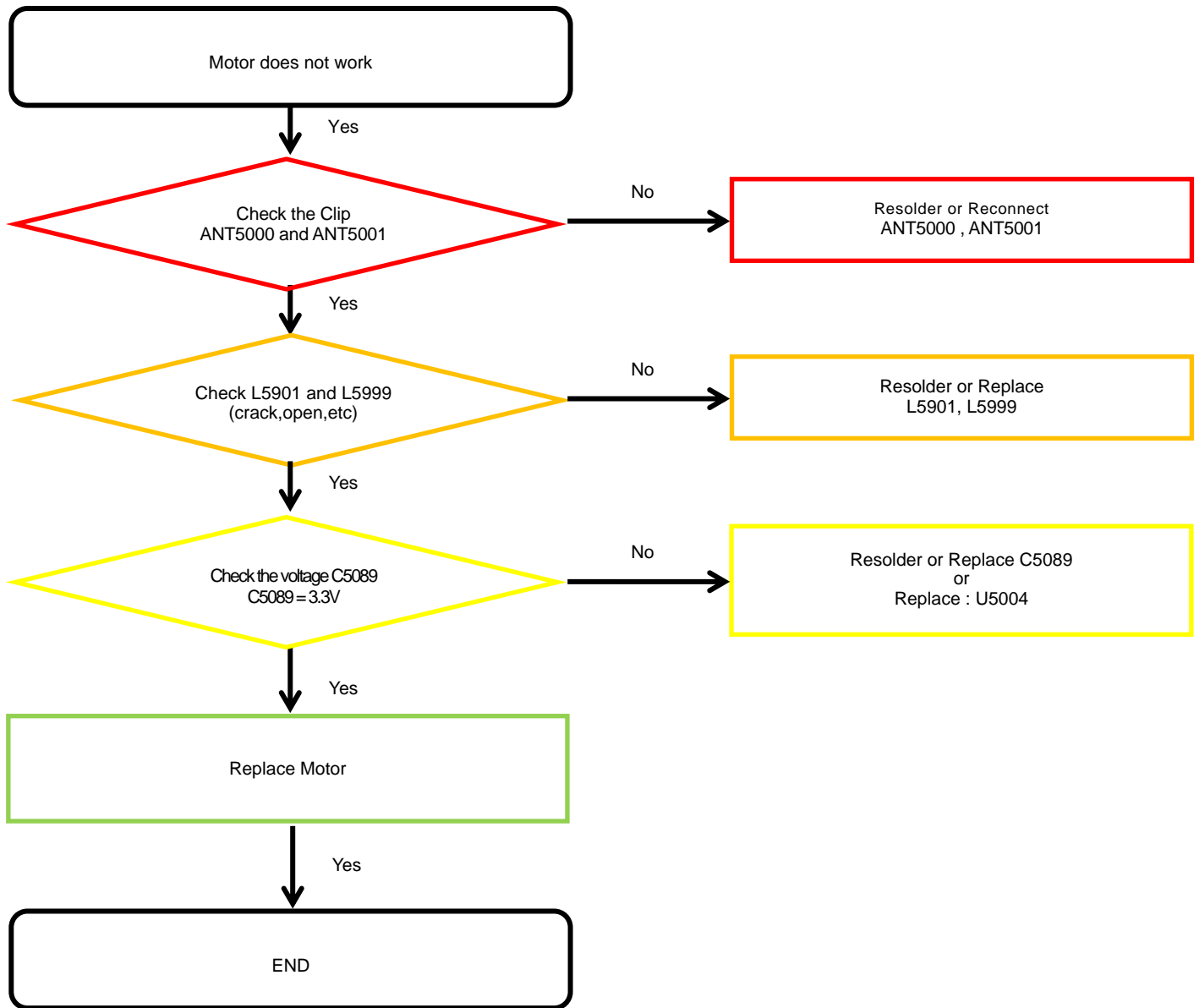
8. Level 3 Repair

8-4-20. VT CAMERA



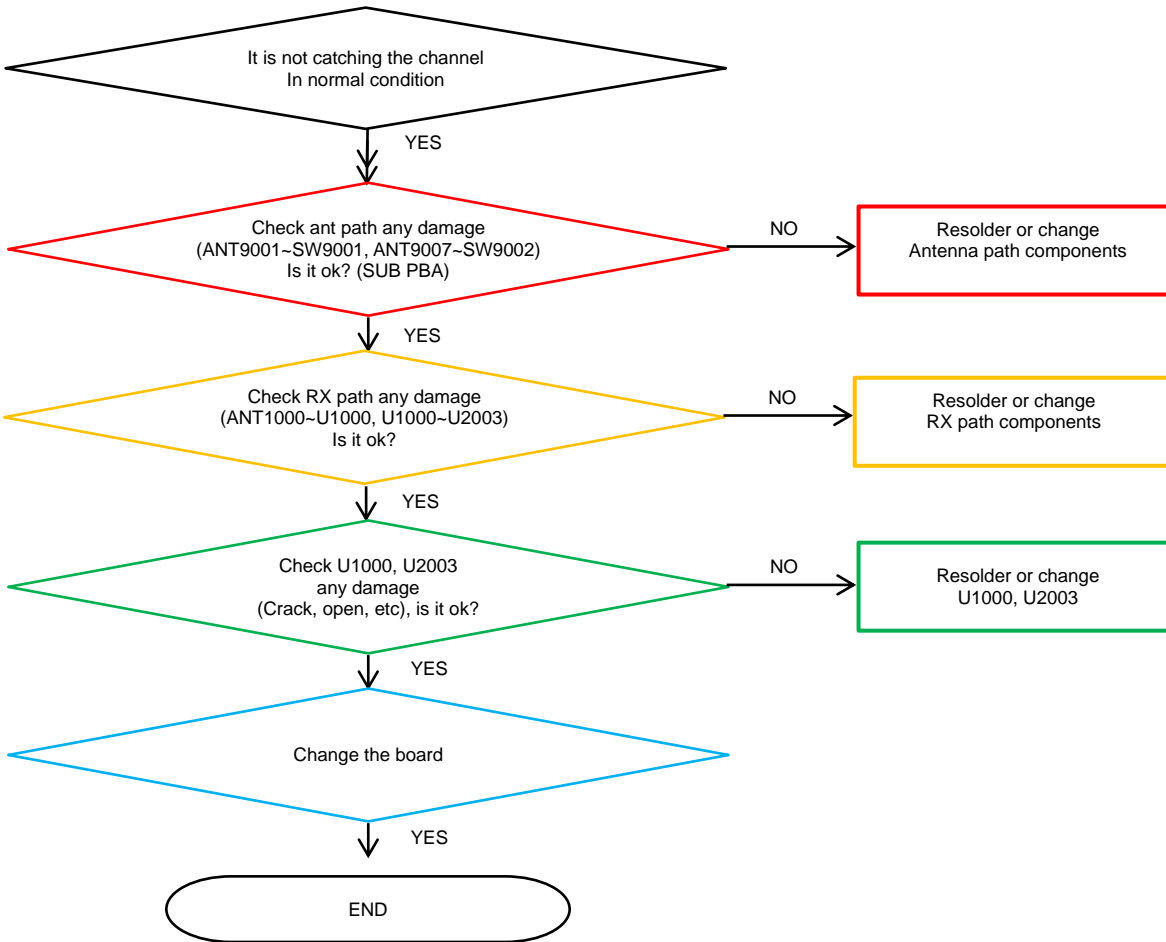
8. Level 3 Repair

8-4-21. Motor



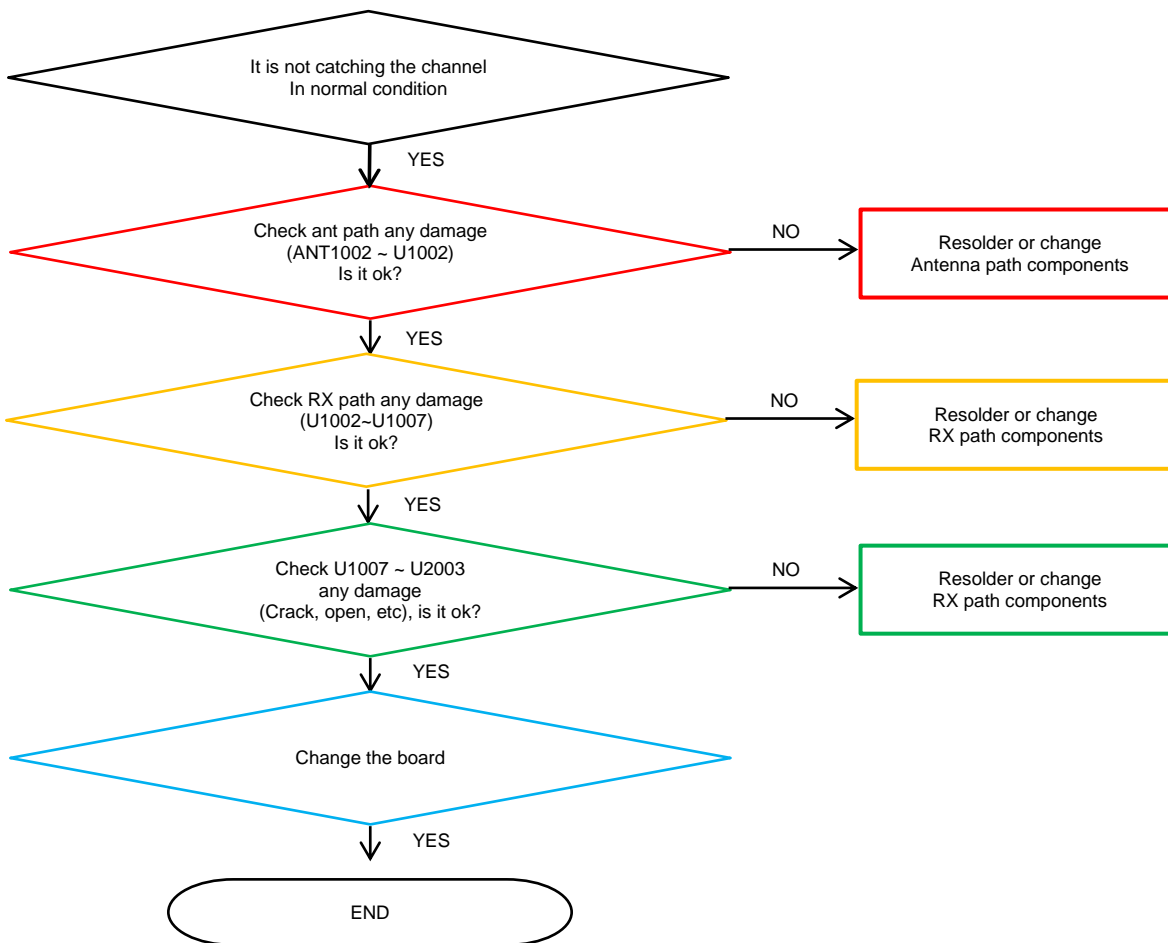
8. Level 3 Repair

8-4-22. GSM 850/900/1800/1900, WCDMA B1/2/4/5/8, LTE B1/2/3/4/5/8/12/13/17/20/26/28/66 PRx



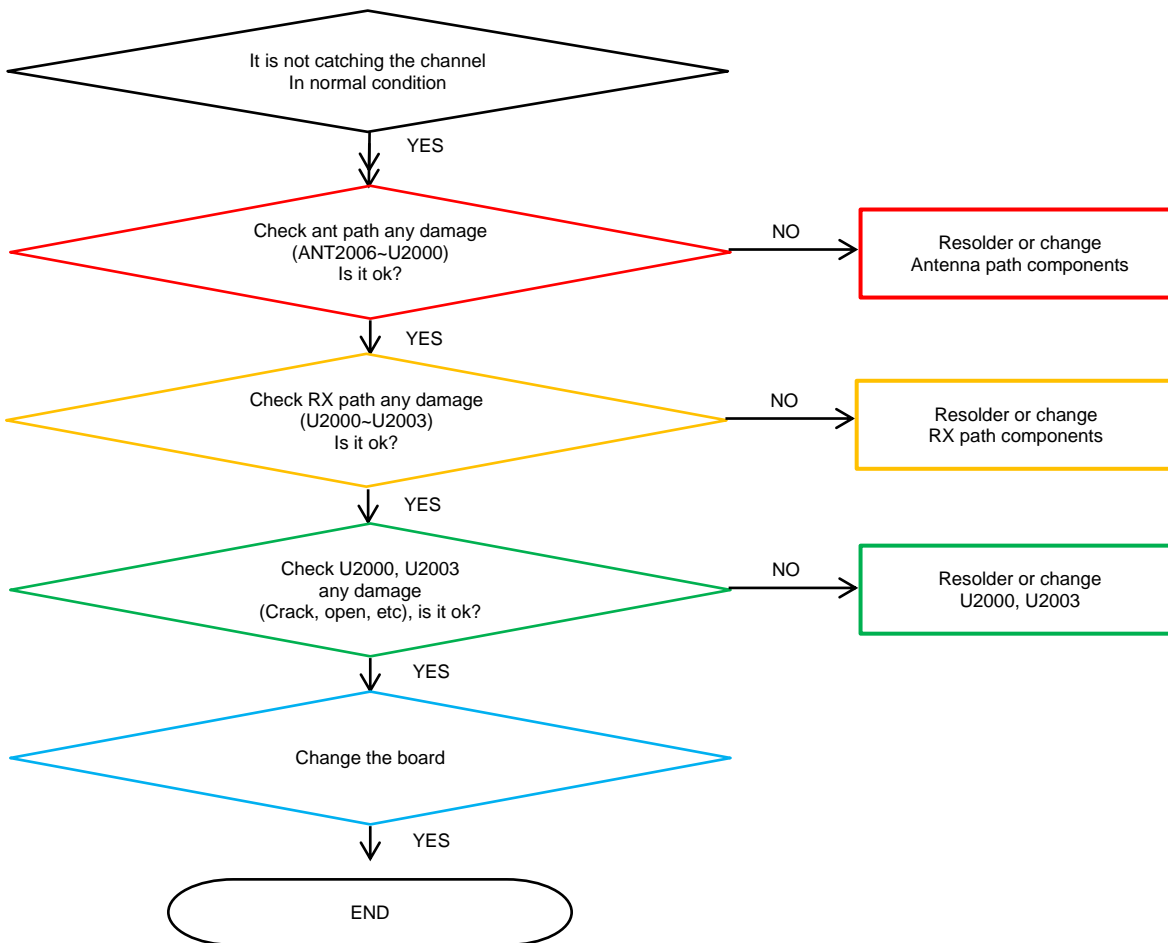
8. Level 3 Repair

8-4-23. LTE B7/38/40/41 PRx



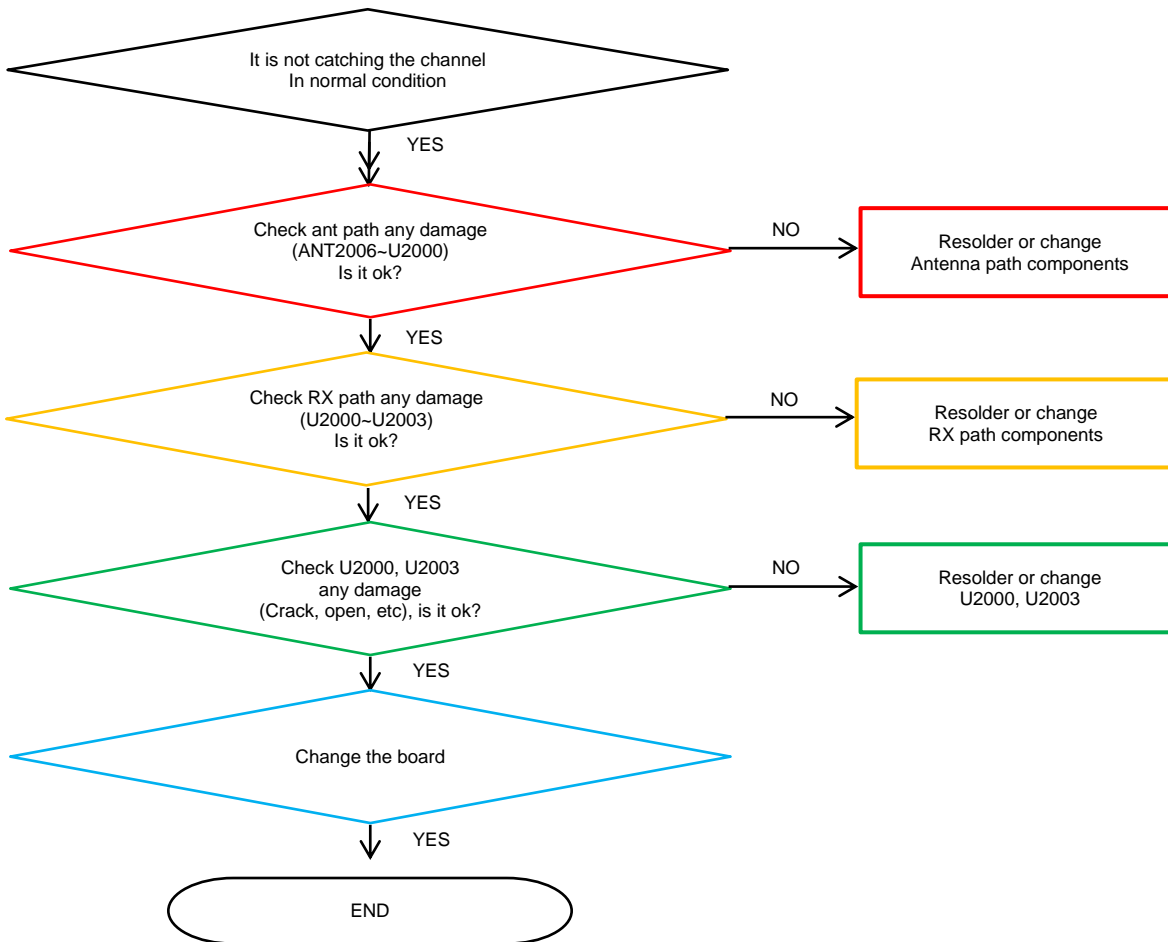
8. Level 3 Repair

8-4-24. GSM 850/900/1800/1900, WCDMA B1/2/4/5/8, LTE B1/2/3/4/5/8/12/13/17/20/26/28/66 DRx



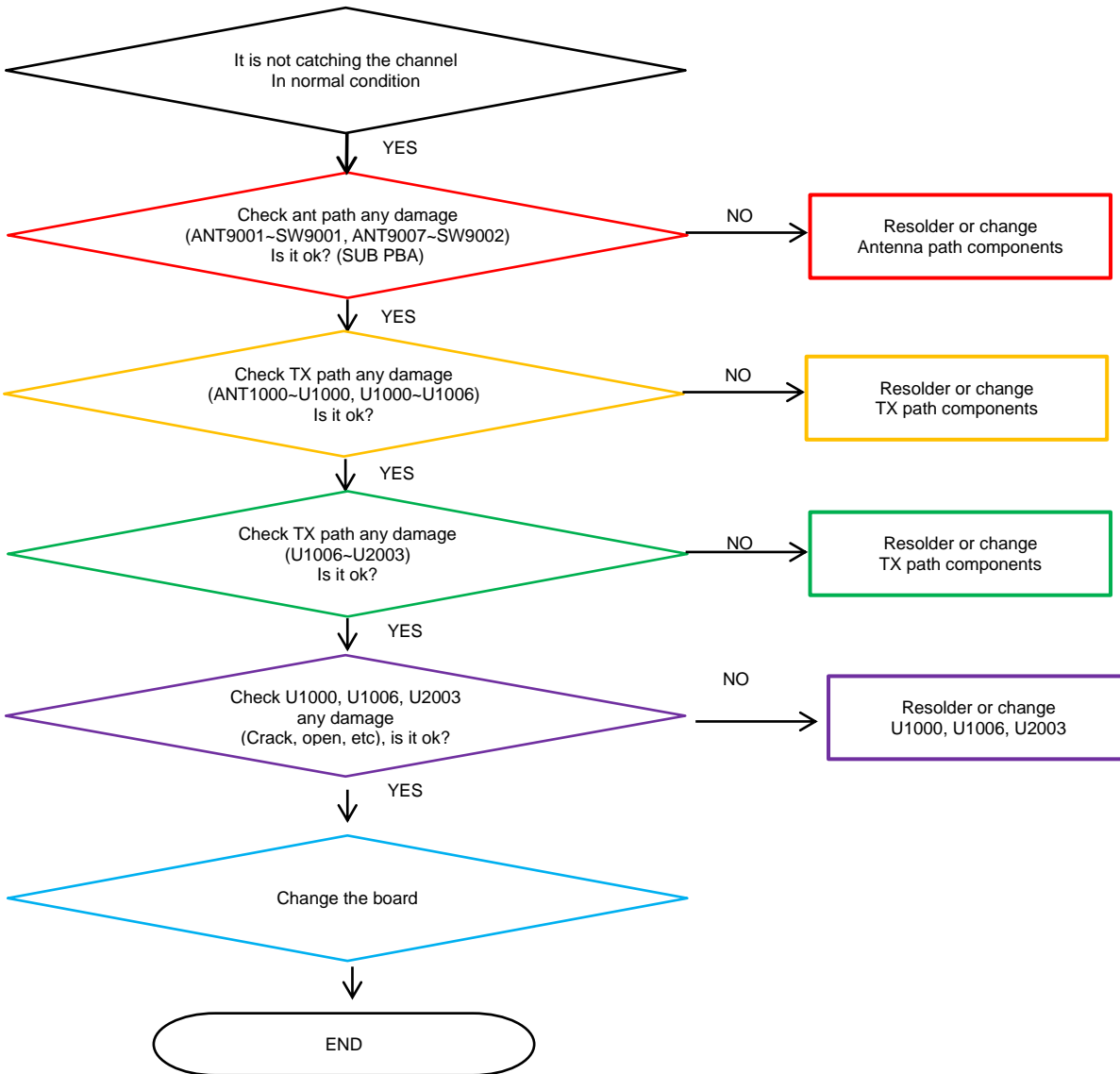
8. Level 3 Repair

8-4-25. LTE B7/38/40/41 DRx



8. Level 3 Repair

8-4-26. GSM 850/900/1800/1900, WCDMA B1/2/4/5/8, LTE B1/2/3/4/5/8/12/13/17/20/26/28/66 Tx



8. Level 3 Repair

8-4-27. LTE B7/38/40/41 Tx

